



# STEEL ENCLOSURES



## INTRODUCTION

AR Corporation Limited is a leading manufacturing & trading company incorporated in 2005 in Hong Kong. We manufacture AKURA range of steel enclosures in our manufacturing facility in mainland China.

We manufacture our range of products to the international standards in a ISO 9001 certified factory with stringent quality control.

AKURA is one of the most price competitive steel enclosures available in the market today. AKURA is one of the most economical enclosure with large ranges of enclosure models, and export to customers around the world.

### Our Products

- Floor Standing Enclosures
- Wall Mounting Box Enclosures
- Distribution Boards
- Terminal Boxes
- Stainless Steel Terminal Boxes
- Stainless Steel Wall Mounting Box Enclosures
- Stainless Steel Free Standing Enclosures



[www.akuraenclosures.com](http://www.akuraenclosures.com)

**CONTENTS**

**Floor Standing Enclosures**

- ▶ AR8000 one piece floor stand cabinet
- ▶ AR8000/D one piece floor stand cabinet - double door
- ▶ AR8000P one piece floor stand cabinet with toughened glass
- ▶ AR9000 floor stand cabinet - single door
- ▶ AR9000 floor stand cabinet - double door
- ▶ AR9000K floor stand cabinet
- ▶ AR9000K un-assembled cabinet
- ▶ AR9000k knock-down cabinet
- ▶ Panels, Plate of AR9, AR8 floor stand cabinet
- ▶ Panel, Plate for AR9000 modular cabinet
- ▶ Multiple door of AR9, AR8 floor stand cabinet
- ▶ Rails of floor stand cabinet
- ▶ Accessories of floor stand cabinet ..... 04 - 16

**Wall Mounting Box Enclosures**

- ▶ Single door wall mount enclosure
- ▶ Double door wall mount enclosure
- ▶ Gland box for wall mount enclosure
- ▶ Plexiglass door wall mount enclosure (STP)
- ▶ Inner door wall mount enclosure (STI)
- ▶ Toughened glass door + Inner door wall mount enclosure (STIP)
- ▶ Accessories of wall mount enclosure ..... 18 - 23

**Distribution Boards**

- ▶ MCB Box ..... 25 - 26

**Terminal Boxes**

- ▶ TL-G series - with gland hole
- ▶ TL series - No gland hole
- ▶ TB series 180° hinges with lock system
- ▶ TBS series 180° hinges with hinges ..... 28

**Stainless Steel Terminal Boxes**

- ▶ Stainless steel terminal box - TLX
- ▶ Stainless steel terminal box - TBX ..... 30

**Stainless Steel Wall Mounting Box Enclosures**

- ▶ Stainless steel box with single door - STX
- ▶ Stainless steel box with inner door - STXI
- ▶ Stainless steel box with inner door + Toughened glass door - STXIP
- ▶ Stainless steel box with toughened glass door - STXP
- ▶ Stainless steel box with double door - STXD
- ▶ New stainless steel box - TNF
- ▶ New stainless steel box - TLXB
- ▶ New stainless steel box - HLP
- ▶ New stainless steel box - TEX
- ▶ Accessories for stainless steel box ..... 32 - 35

**Stainless Steel Free Standing Enclosures**

- ▶ AR9X stainless steel cabinet - single door
- ▶ AR9XP stainless steel cabinet with glass door
- ▶ AR9XI stainless steel cabinet - inner door
- ▶ AR9XIP stainless steel cabinet - inner door with glass door
- ▶ AR9X/D stainless steel cabinet - double door
- ▶ AR8X/D one piece stainless steel cabinet - double door
- ▶ AR8X one piece floor stand stainless steel cabinet - single door
- ▶ AR8XP stainless steel cabinet with toughened glass door
- ▶ Plinth for AR8X, AR9X, stainless steel cabinet ..... 37 - 41



# Floor Standing Enclosures



### AR8000 ONE PIECE FLOOR STAND CABINET

Material: cold steel rolling sheet  
 Protection ratings: IP 55, Impact resistance IK10  
 Color: RAL7032 or RAL 7035, paint finish epoxy polyester powder coating textured finish  
 Thickness of the sheet steel: front door 2.0mm / enclosure body 1.5mm/ bottom cable plate 1.5mm / galvanized mounting plate 2.5mm

**Supply include:**

AR8 structure enclosure body, door complete with MS821 locking system and hinges bottom with removable cable entry, 4 lifting eyebolts  
 Plinth to be offered separately

Model	W x H x D mm	No. of door
AR8 128/3	800 x 1200 x 300	1
AR8 146/3	600 x 1400 x 300	1
AR8 146/4	600 x 1400 x 400	1
AR8 148/3	800 x 1400 x 300	1
AR8 148/4	800 x 1400 x 400	1
AR8 166/3	600 x 1600 x 300	1
AR8 166/4	600 x 1600 x 400	1
AR8 168/3	800 x 1600 x 300	1
AR8 168/4	800 x 1600 x 400	1
AR8 186/3	600 x 1800 x 300	1
AR8 186/4	600 x 1800 x 400	1
AR8 186/5	600 x 1800 x 500	1
AR8 186/6	600 x 1800 x 600	1

Model	W x H x D mm	No. of door
AR8 188/3	800 x 1800 x 300	1
AR8 188/4	800 x 1800 x 400	1
AR8 188/5	800 x 1800 x 500	1
AR8 188/6	800 x 1800 x 600	1
AR8 206/3	600 x 2000 x 300	1
AR8 206/4	600 x 2000 x 400	1
AR8 206/5	600 x 2000 x 500	1
AR8 206/6	600 x 2000 x 600	1
AR8 208/3	800 x 2000 x 300	1
AR8 208/4	800 x 2000 x 400	1
AR8 208/5	800 x 2000 x 500	1
AR8 208/6	800 x 2000 x 600	1

*more size to be request to the clients*



### AR8000/D ONE PIECE FLOOR STAND CABINET - DOUBLE DOOR

**Supply include:**

AR8 structure enclosure body, door complete with MS821 locking system and hinges, bottom with removable cable entry. 4 lifting eyebolts  
 Plinth to be offered separately

Model	W x H x D mm	No. of door
AR8 1010/3D	1000 x 1000 x 300	2
AR8 1210/3D	1000 x 1200 x 300	2
AR8 1212/4D	1200 x 1200 x 400	2
AR8 1410/4D	1000 x 1400 x 400	2
AR8 1412/4D	1200 x 1400 x 400	2
AR8 1610/3D	1000 x 1600 x 300	2
AR8 1610/4D	1000 x 1600 x 400	2
AR8 1612/3D	1200 x 1600 x 300	2
AR8 1612/4D	1200 x 1600 x 400	2
AR8 1810/4D	1000 x 1800 x 400	2
AR8 1810/5D	1000 x 1800 x 500	2
AR8 1812/4D	1200 x 1800 x 400	2

Model	W x H x D mm	No. of door
AR8 1812/5D	1200 x 1800 x 500	2
AR8 1816/4D	1600 x 1800 x 400	2
AR8 1816/5D	1600 x 1800 x 500	2
AR8 2010/4D	1000 x 2000 x 400	2
AR8 2010/5D	1000 x 2000 x 500	2
AR8 2012/4D	1200 x 2000 x 400	2
AR8 2012/5D	1200 x 2000 x 500	2
AR8 2012/6D	1200 x 2000 x 600	2
AR8 2016/4D	1600 x 2000 x 400	2
AR8 2016/5D	1600 x 2000 x 500	2
AR8 2016/6D	1600 x 2000 x 600	2

*more size to be request to the clients*



### AR8000P ONE PIECE FLOOR STAND CABINET WITH TOUGHENED GLASS

**Supply include:**

AR8P structure enclosure body, door complete with MS821 locking system and hinges with toughened glass, bottom with removable cable entry. 4 lifting eyebolts  
 Plinth to be offered separately

Model	W x H x D mm	No. of door
AR8P 128/3	800 x 1200 x 300	1
AR8P 146/3	600 x 1400 x 300	1
AR8P 146/4	600 x 1400 x 400	1
AR8P 148/3	800 x 1400 x 300	1
AR8P 148/4	800 x 1400 x 400	1
AR8P 166/3	600 x 1600 x 300	1
AR8P 166/4	600 x 1600 x 400	1
AR8P 168/3	800 x 1600 x 300	1
AR8P 168/4	800 x 1600 x 400	1
AR8P 186/3	600 x 1800 x 300	1
AR8P 186/4	600 x 1800 x 400	1
AR8P 186/5	600 x 1800 x 500	1
AR8P 186/6	600 x 1800 x 600	1

Model	W x H x D mm	No. of door
AR8P 188/3	800 x 1800 x 300	1
AR8P 188/4	800 x 1800 x 400	1
AR8P 188/5	800 x 1800 x 500	1
AR8P 188/6	800 x 1800 x 600	1
AR8P 206/3	600 x 2000 x 300	1
AR8P 206/4	600 x 2000 x 400	1
AR8P 206/5	600 x 2000 x 500	1
AR8P 206/6	600 x 2000 x 600	1
AR8P 208/3	800 x 2000 x 300	1
AR8P 208/4	800 x 2000 x 400	1
AR8P 208/5	800 x 2000 x 500	1
AR8P 208/6	800 x 2000 x 600	1

*more size to be request to the clients*



### AR9000 FLOOR STAND CABINET - SINGLE DOOR

**Standard Configuration**

Paint finish epoxy polyester powder coating textured finish Color: RAL 7032 or RAL 7035  
 Profile: 9-fold profile Material: cold rolling steel  
 Thickness: front door - 2.0mm, rear panel - 1.5mm Protection degree: IP55  
 Mounting Plate: Zinc coated 2.5mm Impact resistance: IK10

**Supply include:**

Front door with Reinforcing frame, hinges and MS821 lock system, 9 folded profiles 4pcs/set, rear panel, mounting plate & 4 mounting plate supports, 4 lifting eyebolts, top cover, removable cable gland plate  
 plinth to be offered separately

Model	W x H x D mm	No. of door
AR9 146/4	600 x 1400 x 400	1
AR9 146/6	600 x 1400 x 600	1
AR9 146/8	600 x 1400 x 800	1
AR9 148/4	800 x 1400 x 400	1
AR9 148/6	800 x 1400 x 600	1
AR9 148/8	800 x 1400 x 800	1
AR9 166/6	600 x 1600 x 600	1
AR9 166/8	600 x 1600 x 800	1
AR9 168/6	800 x 1600 x 600	1
AR9 168/8	800 x 1600 x 800	1
AR9 186/4	600 x 1800 x 400	1
AR9 186/5	600 x 1800 x 500	1
AR9 186/6	600 x 1800 x 600	1
AR9 186/8	600 x 1800 x 800	1
AR9 188/4	800 x 1800 x 400	1
AR9 188/5	800 x 1800 x 500	1
AR9 188/6	800 x 1800 x 600	1
AR9 1810/4	1000 x 1800 x 400	1
AR9 1810/5	1000 x 1800 x 500	1
AR9 1810/6	1000 x 1800 x 600	1
AR9 203/5	300 x 2000 x 500	1
AR9 203/6	300 x 2000 x 600	1

Model	W x H x D mm	No. of door
AR9 203/8	300 x 2000 x 800	1
AR9 204/5	400 x 2000 x 500	1
AR9 204/6	400 x 2000 x 600	1
AR9 206/4	600 x 2000 x 400	1
AR9 206/5	600 x 2000 x 500	1
AR9 206/6	600 x 2000 x 600	1
AR9 206/8	600 x 2000 x 800	1
AR9 208/4	800 x 2000 x 400	1
AR9 208/5	800 x 2000 x 500	1
AR9 208/6	800 x 2000 x 600	1
AR9 208/8	800 x 2000 x 800	1
AR9 2010/4	1000 x 2000 x 400	1
AR9 2010/5	1000 x 2000 x 500	1
AR9 2010/6	1000 x 2000 x 600	1
AR9 2010/8	1000 x 2000 x 800	1
AR9 2012/4	1200 x 2000 x 400	1
AR9 226/8	600 x 2200 x 800	1
AR9 228/6	800 x 2200 x 600	1
AR9 228/8	800 x 2200 x 800	1
AR9 2210/6	1000 x 2200 x 600	1
AR9 2210/8	1000 x 2200 x 800	1

*more size to be request to the clients*



### AR9000 FLOOR STAND CABINET - DOUBLE DOOR

**Standard Configuration**

Paint finish epoxy polyester powder coating textured finish Color: RAL 7032 or RAL 7035  
 Profile: 9-fold profile Material: cold rolling steel  
 Thickness: front door - 2.0mm, rear panel - 1.5mm Protection degree: IP55  
 Mounting Plate: Zinc coated 2.5mm Impact resistance: IK10

**Supply include:**

Front door with Reinforcing frame, hinges and MS821 lock system, 9 folded profiles 4pcs/set, rear panel, mounting plate & 4 mounting plate supports, 4 lifting eyebolts, top cover, removable cable gland plate  
 plinth to be offered separately

Model	W x H x D mm	No. of door
AR9 1810/4D	1000 x 1800 x 400	2
AR9 1810/5D	1000 x 1800 x 500	2
AR9 1810/6D	1000 x 1800 x 600	2
AR9 1812/4D	1200 x 1800 x 400	2
AR9 1812/5D	1200 x 1800 x 500	2
AR9 1812/6D	1200 x 1800 x 600	2
AR9 2010/4D	1000 x 2000 x 400	2
AR9 2010/5D	1000 x 2000 x 500	2
AR9 2010/6D	1000 x 2000 x 600	2

Model	W x H x D mm	No. of door
AR9 2010/8D	1000 x 2000 x 800	2
AR9 2012/4D	1200 x 2000 x 400	2
AR9 2012/5D	1200 x 2000 x 500	2
AR9 2012/6D	1200 x 2000 x 600	2
AR9 2012/8D	1200 x 2000 x 800	2
AR9 2210/6D	1000 x 2200 x 600	2
AR9 2210/8D	1000 x 2200 x 800	2
AR9 2212/6D	1200 x 2200 x 600	2
AR9 2212/8D	1200 x 2200 x 800	2

*more size to be request to the clients*



**AR9000K FLOORSTAND CABINET/ AR9000K UN-ASSEMBLED CABINET/AR9000K KNOCK-DOWN CABINET**

		9-FOLDED PROFILES	TOP COVER & BOTTOM	FRONT DOOR BACK PANEL	FRONT DOOR	BACK PANEL	MOUNTING PLATE	SIDE PANELS
MODEL	SIZE (W x H x D) mm	9-FOLDED PROFILES	TOP COVER & BOTTOM	FRONT DOOR BACK PANEL	FRONT DOOR	BACK PANEL	MOUNTING PLATE	SIDE PANELS
AR9 164/4K	400 x 1600 x 400	F16	TCB44	FBD164	FD164	BD164	MP164	ARSP164
AR9 164/5K	400 x 1600 x 500	F16	TCB45	FBD164	FD164	BD164	MP164	ARSP165
AR9 164/6K	400 x 1600 x 600	F16	TCB46	FBD164	FD164	BD164	MP164	ARSP166
AR9 166/4K	600 x 1600 x 400	F16	TCB64	FBD166	FD166	BD166	MP166	ARSP164
AR9 166/5K	600 x 1600 x 500	F16	TCB65	FBD166	FD166	BD166	MP166	ARSP165
AR9 166/6K	600 x 1600 x 600	F16	TCB66	FBD166	FD166	BD166	MP166	ARSP166
AR9 168/4K	800 x 1600 x 400	F16	TCB84	FBD168	FD168	BD168	MP168	ARSP164
AR9 168/5K	800 x 1600 x 500	F16	TCB85	FBD168	FD168	BD168	MP168	ARSP165
AR9 168/6K	800 x 1600 x 600	F16	TCB86	FBD168	FD168	BD168	MP168	ARSP166
AR9 184/4K	400 x 1800 x 400	F18	TCB44	FBD184	FD184	BD184	MP184	ARSP184
AR9 184/5K	400 x 1800 x 500	F18	TCB45	FBD184	FD184	BD184	MP184	ARSP185
AR9 184/6K	400 x 1800 x 600	F18	TCB46	FBD184	FD184	BD184	MP184	ARSP186
AR9 186/4K	600 x 1800 x 400	F18	TCB64	FBD186	FD186	BD186	MP186	ARSP184
AR9 186/5K	600 x 1800 x 500	F18	TCB65	FBD186	FD186	BD186	MP186	ARSP185
AR9 186/6K	600 x 1800 x 600	F18	TCB66	FBD186	FD186	BD186	MP186	ARSP186
AR9 188/4K	800 x 1800 x 400	F18	TCB84	FBD188	FD188	BD188	MP188	ARSP184
AR9 188/5K	800 x 1800 x 500	F18	TCB85	FBD188	FD188	BD188	MP188	ARSP185
AR9 188/6K	800 x 1800 x 600	F18	TCB86	FBD188	FD188	BD188	MP188	ARSP186
AR9 188/8K	800 x 1800 x 800	F18	TCB88	FBD188	FD188	BD188	MP188	ARSP188
AR9 1810/4K	1000 x 1800 x 400	F18	TCB104	FBD1810	FD1810	BD1810	MP1810	ARSP184
AR9 1810/5K	1000 x 1800 x 500	F18	TCB105	FBD1810	FD1810	BD1810	MP1810	ARSP185
AR9 1810/6K	1000 x 1800 x 600	F18	TCB106	FBD1810	FD1810	BD1810	MP1810	ARSP186
AR9 204/4K	400 x 2000 x 400	F20	TCB44	FBD204	FD204	BD204	MP204	ARSP204
AR9 204/5K	400 x 2000 x 500	F20	TCB45	FBD204	FD204	BD204	MP204	ARSP205
AR9 204/6K	400 x 2000 x 600	F20	TCB46	FBD204	FD204	BD204	MP204	ARSP206
AR9 206/4K	600 x 2000 x 400	F20	TCB64	FBD206	FD206	BD206	MP206	ARSP204
AR9 206/5K	600 x 2000 x 500	F20	TCB65	FBD206	FD206	BD206	MP206	ARSP205
AR9 206/6K	600 x 2000 x 600	F20	TCB66	FBD206	FD206	BD206	MP206	ARSP206
AR9 206/8K	600 x 2000 x 800	F20	TCB68	FBD206	FD206	BD206	MP206	ARSP208
AR9 208/4K	800 x 2000 x 400	F20	TCB84	FBD208	FD208	BD208	MP208	ARSP204
AR9 208/5K	800 x 2000 x 500	F20	TCB85	FBD208	FD208	BD208	MP208	ARSP205
AR9 208/6K	800 x 2000 x 600	F20	TCB86	FBD208	FD208	BD208	MP208	ARSP206
AR9 208/8K	800 x 2000 x 800	F20	TCB88	FBD208	FD208	BD208	MP208	ARSP208
AR9 2010/4K	1000 x 2000 x 400	F20	TCB104	FBD2010	FD2010	BD2010	MP2010	ARSP204
AR9 2010/5K	1000 x 2000 x 500	F20	TCB105	FBD2010	FD2010	BD2010	MP2010	ARSP205
AR9 2010/6K	1000 x 2000 x 600	F20	TCB106	FBD2010	FD2010	BD2010	MP2010	ARSP206
AR9 226/4K	600 x 2200 x 400	F22	TCB64	FBD226	FD226	BD226	MP226	ARSP224
AR9 226/5K	600 x 2200 x 500	F22	TCB65	FBD226	FD226	BD226	MP226	ARSP225
AR9 226/6K	600 x 2200 x 600	F22	TCB66	FBD226	FD226	BD226	MP226	ARSP226
AR9 226/8K	600 x 2200 x 800	F22	TCB68	FBD226	FD226	BD226	MP226	ARSP228
AR9 228/4K	800 x 2200 x 400	F22	TCB84	FBD228	FD228	BD228	MP228	ARSP224
AR9 228/5K	800 x 2200 x 500	F22	TCB85	FBD228	FD228	BD228	MP228	ARSP225
AR9 228/6K	800 x 2200 x 600	F22	TCB86	FBD228	FD228	BD228	MP228	ARSP226
AR9 2210/4K	1000 x 2200 x 400	F22	TCB104	FBD2210	FD2210	BD2210	MP2210	ARSP224
AR9 2210/5K	1000 x 2200 x 500	F22	TCB105	FBD2210	FD2210	BD2210	MP2210	ARSP225
AR9 2210/6K	1000 x 2200 x 600	F22	TCB106	FBD2210	FD2210	BD2210	MP2210	ARSP226
AR9D 1610/4K	1000 x 1600 x 400	F16/D	TCB104/D	FBD1610/D	FD1610/D	BD1610	MP1610	ARSP164
AR9D 1610/5K	1000 x 1600 x 500	F16/D	TCB105/D	FBD1610/D	FD1610/D	BD1610	MP1610	ARSP165
AR9D 1612/4K	1200 x 1600 x 400	F16/D	TCB124/D	FBD1612/D	FD1612/D	BD1612	MP1612	ARSP164
AR9D 1612/5K	1200 x 1600 x 500	F16/D	TCB125/D	FBD1612/D	FD1612/D	BD1612	MP1612	ARSP165
AR9D 1810/4K	1000 x 1800 x 400	F18/D	TCB104/D	FBD1810/D	FD1810/D	BD1810	MP1810	ARSP184
AR9D 1810/5K	1000 x 1800 x 500	F18/D	TCB105/D	FBD1810/D	FD1810/D	BD1810	MP1810	ARSP185
AR9D 1810/6K	1000 x 1800 x 600	F18/D	TCB106/D	FBD1810/D	FD1810/D	BD1810	MP1810	ARSP186
AR9D 1812/4K	1200 x 1800x 400	F18/D	TCB124/D	FBD1812/D	FD1812/D	BD1812	MP1812	ARSP184
AR9D 1812/5K	1200 x 1800 x 500	F18/D	TCB125/D	FBD1812/D	FD1812/D	BD1812	MP1812	ARSP185
AR9D 1812/6K	1200 x 1800 x 600	F18/D	TCB126/D	FBD1812/D	FD1812/D	BD1812	MP1812	ARSP186

**AR9000K FLOORSTAND CABINET/ AR9000K UN-ASSEMBLED CABINET/AR9000K KNOCK-DOWN CABINET**

MODEL	W x H x D mm	9-FOLDED PROFILES	TOP COVER & BOTTOM	FRONT DOOR BACK PANEL	FRONT DOOR	BACK PANEL	MOUNTING PLATE	SIDE PANELS
AR9D 2010/4K	1000 x 2000 x 400	F20/D	TCB104/D	FBD2010/D	FD2010/D	BD2010	MP2010	ARSP204
AR9D 2010/5K	1000 x 2000 x 500	F20/D	TCB105/D	FBD2010/D	FD2010/D	BD2010	MP2010	ARSP205
AR9D 2010/6K	1000 x 2000 x 600	F20/D	TCB106/D	FBD2010/D	FD2010/D	BD2010	MP2010	ARSP206
AR9D 2012/4K	1200 x 2000 x 400	F20/D	TCB124/D	FBD2012/D	FD2012/D	BD2012	MP2012	ARSP204
AR9D 2012/5K	1200 x 2000 x 500	F20/D	TCB125/D	FBD2012/D	FD2012/D	BD2012	MP2012	ARSP205
AR9D 2012/6K	1200 x 2000 x 600	F20/D	TCB126/D	FBD2012/D	FD2012/D	BD2012	MP2012	ARSP206
AR9D 2210/5K	1000 x 2200 x 500	F22/D	TCB105/D	FBD2210/D	FD2210/D	BD2210	MP2210	ARSP225
AR9D 2210/6K	1000 x 2200 x 600	F22/D	TCB106/D	FBD2210/D	FD2210/D	BD2210	MP2210	ARSP226
AR9D 2212/5K	1200 x 2200 x 500	F22/D	TCB125/D	FBD2212/D	FD2212/D	BD2212	MP2212	ARSP225
AR9D 2212/6K	1200 x 2200 x 600	F22/D	TCB126/D	FBD2212/D	FD2212/D	BD2212	MP2212	ARSP226

**AR9000K floor stand cabinet**

**Standard Configuration:**

AR9K metal floor stand cabinets comprise a 9-folded profile structure, un-welded at the top and bottom of the frame, with removable screws in vertical profiles for strength and versatility with the cabinets, Thermosetting epoxy polyester powder coating in textured. RAL 7035 or RAL 7032

**Supply include:**

9-folded profiles 4pcs/set (model: F): hinged uprights, panel mounts and locking elements assembled. Top cover and base (Model: TCB): welded top frame, welded base, mounting plate fixing support. Back panel and front door (Model: FBD): plain door with lock, plain back panel. Galvanized mounting Plate (Model: MP) Side panels (Model: ARSP): 2pcs side panels with accessories

**Toughened glass door for AR9000 cabinets**

Color: RAL 7032 or RAL 7035  
 Protection degree: IP55  
 Material: toughened glass 5.0mm  
 Impact resistance: IK 10

**ARPX toughened glass door supply include:**

Toughened glass door thickness 5.0mm and fixing accessories lock system, hinges

Note: **not include cabinet**

Glass door Model	for cabinet size(mm)		Glass door Model	for cabinet size(mm)	
	W	H		W	H
ARPX 126	600	1200	ARPX 188	800	1800
ARPX 128	800	1200	ARPX 1810	1000	1800
ARPX 146	600	1400	ARPX 206	600	2000
ARPX 148	800	1400	ARPX 208	800	2000
ARPX 166	600	1600	ARPX 2010	1000	2000
ARPX 168	800	1600	ARPX 226	600	2200
ARPX 186	600	1800	ARPX 228	800	2200

*more size to be request to the clients*



**Inner door for AR9000 cabinets**

Color: RAL 7032 or RAL 7035  
 Material: cold steel 2.0mm thickness  
 Impact resistance: IK 10

**ARID Inner door supply include:**

Inner door and fixing accessories, lock system, hinges

Note: **not include cabinet**

Inner door Model	for cabinet size(mm)		Inner door Model	for cabinet size(mm)	
	W	H		W	H
ARID 126	600	1200	ARID 188	800	1800
ARID 128	800	1200	ARID 1810	1000	1800
ARID 146	600	1400	ARID 206	600	2000
ARID 148	800	1400	ARID 208	800	2000
ARID 166	600	1600	ARID 2010	1000	2000
ARID 168	800	1600	ARID 226	600	2200
ARID 186	600	1800	ARID 228	800	2200

*more size to be request to the clients*





**PANELS, PLATE OF AR9, AR8 FLOOR STAND CABINET**

Panels or plates are to be ordered separately to the clients special requirement  
 AKURA standard plates consist of: surface plate, flush plate, blank plate, punched plate

Note:  
 To fix the panels or plates on the cabinets by using H Rails with WD rails  
 4pcs - 6pcs



Cabinet with panels or plates

**Punched front panel - component panel**

Flush Panel  
 Panel for Modular Component

Note:  
 To fix the panels or plates on the cabinets by using H Rails with WD rails

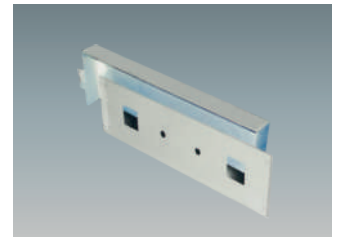
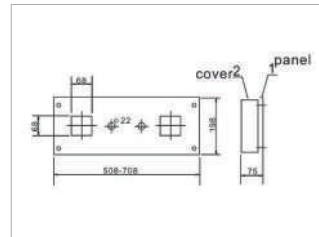


**Flush Panel**

Manufactured in 1.5mm sheet steel  
 Supply include: back panel, punched front cover, closed with fixing accessories  
 Package: 1 peice with accossories

Note:  
 To fix the panels or plates on the cabinets by using H Rails with WD rails

Model	Cabinet Width	Ref	Description	PCS
MDP03 102F	600	1	Panel	1
MDP04 102	600	2	Cover	1
MDP03 202F	800	1	Panel	1
MDP04 202	800	2	Cover	1

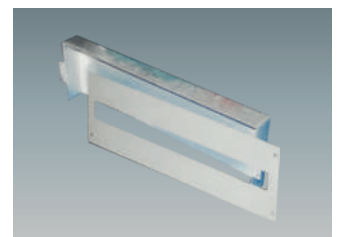
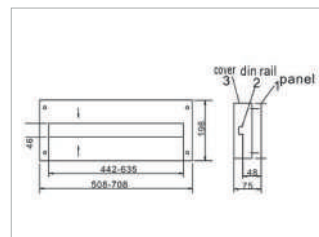


**Panel for modular component**

Manufactured in 1.5mm sheet steel  
 Supply include: back panel, punched front cover, DIN rail, closed with fixing accessories  
 Package: 1 peice with accossories

Note:  
 To fix the panels or plates on the cabinets by using H Rails with WD rails

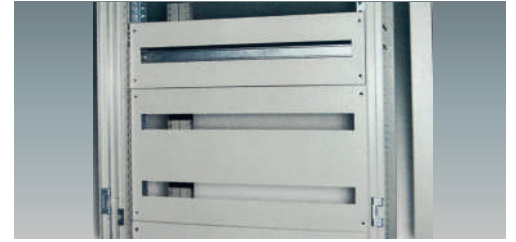
Model	Cabinet Width	Ref	Description	Pcs
MDP02 102F	600	1	Panel	1
	600	2	DIN Rail 1 x 25p	1
MDP04 102	600	3	Cover	1
	800	1	Pannel	1
MDP02 202F	800	2	DIN Rail 1 x 25p	1
	800	3	Cover	1



**PANELS, PLATE FOR AR9000 MODULAR CABINET**

**DIN Panel for modular components**

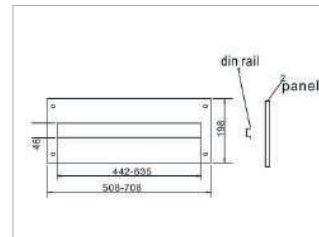
Manufactured in 1.5mm sheet steel.  
 Supplied complete with zinc coated DIN rail and fixing accessories with screws and captive bush  
 Note: To fix the panels or plates on the cabinets by using H Rails with WD rails



**DIN Panel**

Manufactured in 1.5mm sheet steel  
 Supply include: punched front cover, zinc-coated DIN rail and fixing accessories  
 Pack: 1 peice  
 Note: To fix the panels or plates on the cabinets by using H Rails with WD rails

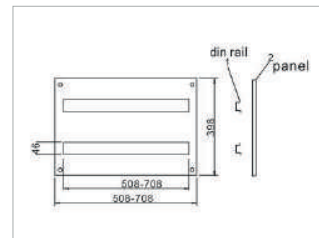
Model	Cabinet Width (mm)	Ref	Description	Pcs
MDP02 102F	600	Panel 1 x25P		
		1	DIN Rail	1
		2	Panel	1
MDP02 202F	800	Panel 3 x36P		
		1	DIN Rail	1
		2	Panel	1



**DIN panel**

Manufactured in 1.5mm sheet steel  
 Supply include: punched front cover, zinc-coated DIN rail 2pcs and fixing accessories  
 Package: 1 peice  
 Note: To fix the panels or plates on the cabinets by using H Rails with WD rails

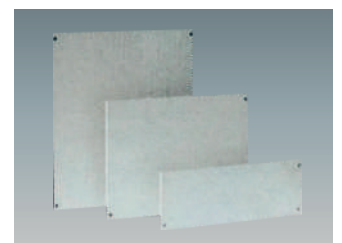
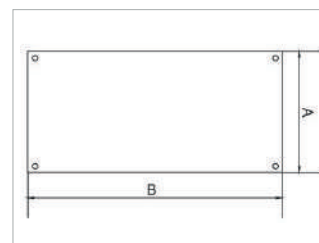
Model	Cabinet Width (mm)	Ref	Description	Pcs
MDP02 104F	600	Panel 1 x25P		
		1	DIN Rail	1
		2	Panel	1
MDP02 204F	800	Panel 3 x36P		
		1	DIN Rail	1
		2	Panel	1



**Surface Plate**

Supply include: Blank surface plate supplied with fixing accessories  
 Pack: 1 peice  
 Note: To fix the panels or plates on the cabinets by using H Rails with WD rails

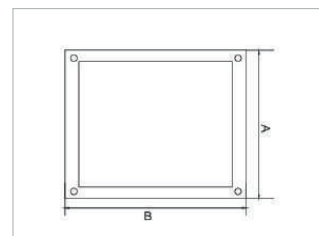
Model	Cabinet Width (mm)	Surface Plate	
		B	A
MDP602	600	508	200
MDP603			300
MDP604			400
MDP606			600
MDP602	800	708	200
MDP603			300
MDP604			400
MDP606			600



**Flush Plate**

Supply include: Blank surface plate supplied with fixing accessories  
 Pack: 1 peice  
 Note: To fix the panels or plates on the cabinets by using H Rails with WD rails

Model	Cabinet Width (mm)	Panel (mm)	
		B	A
MDP604F	600	508	400
MDP606F			600
MDP804F			400
MDP806F	800	708	600



**MULTIPLE DOOR OF AR9, AR8 FLOOR STAND CABINET**



- Seal cover
- Multiple door: Model MT, MTP
- Multiple door: Model MT, MTP
- Clamp Board

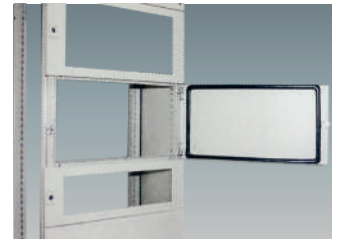
After you purchased AR9000, AR8000 cabinets, multiple door, clamp boards, seal cover are your choice again.

**Multiple door**

Supply include: In 1.5mm sheet steel complete with gasket and locking system, hinge  
 MT: without plexiglass door    MTP: with plexiglass door

for cabinet width, height

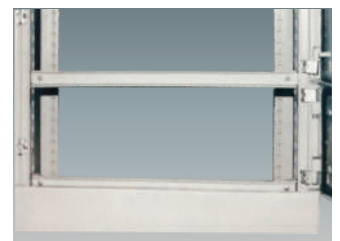
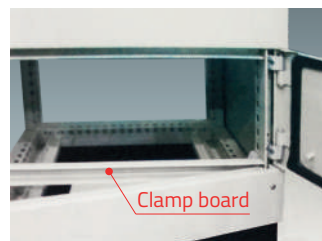
Model	Model	Width (mm)	Height (mm)
MTP602	MT602	600	200
MTP603	MT603	600	300
MTP604	MT604	600	400
MTP605	MT605	600	500
MTP606	MT606	600	600
MTP608	MT608	600	800
MTP609	MT609	600	900
MTP6010	MT6010	600	1000
MTP802	MT802	800	200
MTP803	MT803	800	300
MTP804	MT804	800	400
MTP805	MT805	800	500
MTP806	MT806	800	600
MTP808	MT808	800	800
MTP809	MT809	800	900
MTP8010	MT8010	800	1000



**Clamp board**

To fix multiple door, by using clamp board,  
 Material: is made up of 1.5mm, sheet steel with fixing accessories  
 Supply include: 5pcs clamp boards & its fixing accessories

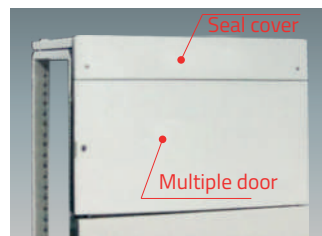
Model	Width (mm)	Pack
MT600	600	5PCS/SET
MT800	800	5PCS/SET



**Seal Cover**

To fix multiple door, by using seal cover to have nice look  
 Material: In 1.5mm, sheet steel for sealing the top & bottom of cabinet  
**Supply include:** 4pcs seal covers & its fixing accessories  
 Pack: 4pcs/set

Model	W x H (mm)	Pack
MT006	600 x 100	4PCS/SET
MT008	800 x 100	4PCS/SET

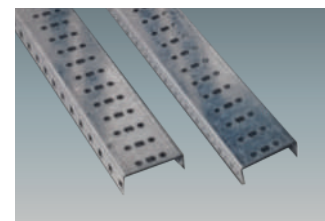


## RAILS OF FLOOR STAND CABINET

### H rail for blank front plate

This rail is easy to fix on the cabinet height from 1400mm - 2200mm, for fixing Din rail, MDP panel (surface plate/ flush plate),  
 Material: manufactured in 1.5mm galvanized sheet steel      Supply include: H rail      Pack: 2 pieces

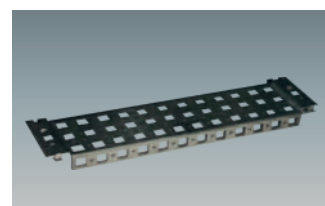
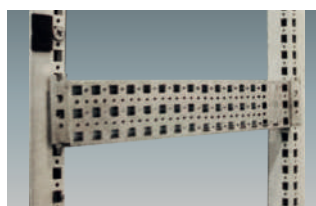
Model	for cabinet height (mm)
H1400	1400mm
H1600	1600mm
H1800	1800mm
H2000	2000mm
H2200	2200mm



### WD rail, WW rail

Material: manufactured in 1.5mm galvanized sheet steel with 8pcs fixing screws M5x9mm, install on the frame of the cabinet  
 Supply include: WD rail or WW rail with fixing accessories      Pack: 4 pieces

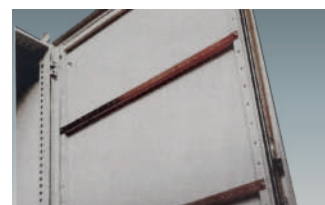
Model	for depth of cabinet (mm)			
	WD400	WD500	WD600	WD800
Dimension	400	500	600	800
Pcs/set	4	4	4	4
Model	WW600	WW800	WW1000	WW1200
Dimension	600	800	1000	1200
Pcs/set	4	4	4	4



### Door rail

Material: manufactured in 1.5mm sheet steel with 2pcs fixing screws M5x9mm  
 Supply include: Door rail with fixing accessories      Pack: 1 pieces

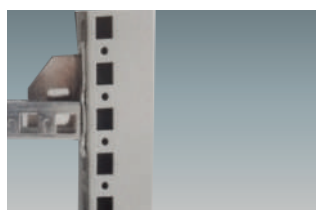
Model	for cabinet width (mm)	Single or double door
WA470	600	Single
WA670	800	Single
WA870	1000	Single
WA270	800	Double
WA370	1000	Double



### WHD rail

Manufactured in 1.5mm zinc passivated sheet steel,  
**Perforated** rail 23 x 23mm, by using angle bracket WHD001 install on the profile of cabinet

**Supply include:** WHD rail with insert nut WA8 2pcs, screws M8 2pcs, angle bracket WHD001 one set (1 peice left bracket, 1 peice right bracket, 2pcs screws M5x9mm). Pack: 12 pieces/ 6 pieces from 1600mm length.



Model	WHD 400 (mm)	WHD 500 (mm)	WHD 600 (mm)	WHD 800 (mm)	WHD 1000 (mm)	WHD 1200 (mm)	WHD 1600 (mm)	WHD 1800 (mm)	WHD 2000 (mm)	WHD 2200 (mm)
Length	295	395	495	695	895	1095	1495	1695	1895	2095
W H D	400	500	600	800	1000	1200	1600	1800	2000	2200
Pcs/Set	12	12	12	12	12	12	6	6	6	6

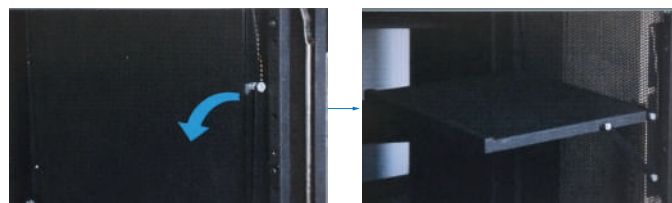
**ACCESSORIES OF FLOOR STAND CABINET**

**PC plate (Laptop plate)**

PC plate is manufactures in 1.5mm sheet steel, fixing on the door of the cabinet to hold the laptop for easily operation.

Supply include: PC plate with fixing accessories Pack: 1 pieces Carrying capacity: 30KG Max Color: RAL 6022 black

Model	W	D	Cabinet width (mm)
C44	413	400	600
C64	613	400	800



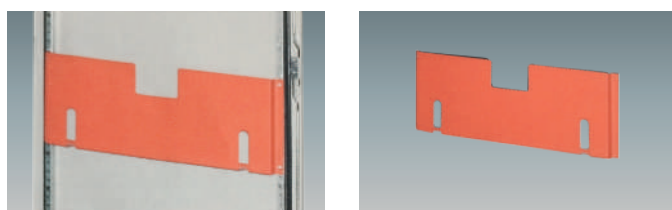
**Steel plan pocket**

manufactured in 1.5mm sheet steel with 4pcs fixing screws M5x9mm.

Color: RAL2008 Thickness: 1.5mm steel

Supply include: steel plan pocket with fixing accessories Pack: 1 pieces

Model	for cabinet width (mm)	W	Size (mm)		D
			H		
PP400	400	255	260		90
PP500	500	355	260		90
PP600	600	455	260		90
PP800	800	655	260		90
PP900	900	755	260		90
PP1000	1000	855	260		90



**A4 plastic plan pocket**

Model: PP100

Material: ABS

Color: Orange

Supply include: A4 plastic plan pocket

Pack: 1 piece



**Divide plate**

Divide plate is manufactured in 1.5mm galvanized sheet steel with 4pcs fixing screws M8 x 16mm, 4Pcs fixing brackets by using WD rails or WHD rails to hold divide plate (WD rail/ WHD rails 4pcs/set to be offered separately)

Supply include: Divide plate with fixing accessories pack: 1 peices

Model	for cabinet width (mm)	W x H (mm)
MP 64	600	492 x 333
MP 82	800	692 x 133
MP 86	800	692 x 533
MP 104	1000	892 x 333
MP 106	1000	892 x 533
MP 122	1200	1092 x 133
MP 124	1200	1092 x 333
MP 126	1200	1092 x 533



**Component plate**

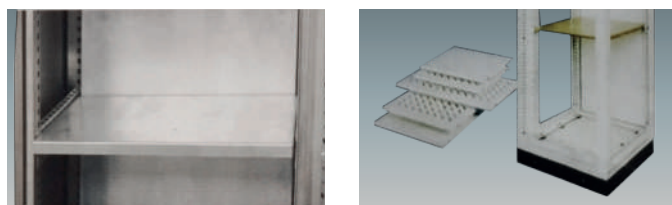
Manufactured in 1.5mm galvanized sheet steel, fixing by using WD rails 2pcs (WD rails to be offered separately), 4pcs fixing screws M8 x 16mm, insert nut WA8 4pcs

Two model: max carrying ability 50KG (component plate with holes)

max carrying ability 100KG (no holes)

Supply include: component plate with fixing accessories Pack: 1piece

Max. weight Cabinet Width	W x D (mm)	W/T holes 50KG		W/O holes 1000KG	
		Model	Model	Model	Model
600	300 x 471	MPH 604	MPH 604F		
	400 x 471	MPH 605	MPH 605F		
	500 x 471	MPH 606	MPH 606F		
800	300 x 671	MPH 804	MPH 804F		
	400 x 671	MPH 805	MPH 805F		
	500 x 671	MPH 806	MPH 806F		



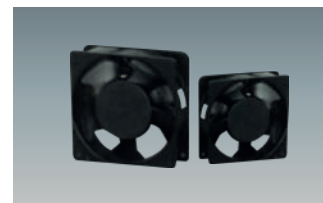
**ACCESSORIES OF FLOOR STAND CABINET**

**Fan**

ABS synthetic resin, fire resistant and UV-resistant, dustproof coefficient: 80%

Purchase the filter together for fan fixing

Model	The outer part	Voltage	Current	Air Flow
KA1238HA2B	120 x 120 x 38mm	220~240VAC	0.13/0.11A	120/140CFM
KA1725HA2B	Ø172 x 55mm	220~240VAC	0.13/0.12A	218/245CFM
KA2206HA2B - 2P	Ø220 x 60mm	220~240VAC	0.25/0.18A	430/490CFM
KA2509HA2B - 2P	Ø254 x 89mm	220~240VAC	0.28/0.22A	666/730CFM



**Filter**

Purchase the fan together for filter fixing for customer choice

Model	The outer part	Efficient blast volume	Level of protection	Applicable blower fan
FU-9803A	148.5 x 148.5 x 13.5mm	25.0m3/min	IP44	KA1238HA2B
FU-9804A	204 x 204 x 13.5mm	50.0m3/min	IP44	KA1725HA2B
FU-9805A	255 x 255 x 13.5mm	80.0m3/min	IP44	KA2206HA2B - 2P
FU-9806A	320 x 320x 13.5mm	120m3/min	IP44	KA2509HA2B - 2P



**Plinth for AR8000 / AR9000 cabinet**

Standard plinth: Height= 100mm (H100), Height= 200mm (H200),  
Material: Manufactured in 2.5mm sheet steel with 8pcs fixing screws

M6 x 16mm

Paint finish: epoxy polyester powder coating textured finish

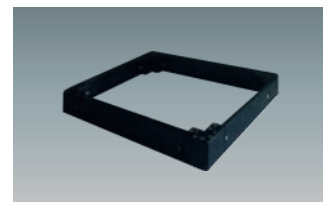
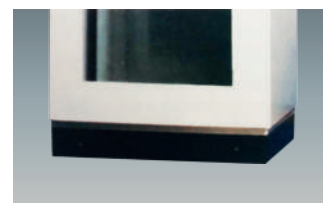
Color: RAL6022 black

Supply include: plinth with fixing accessories

Pack: 1 piece

Model		cabinet size (mm)	
H100	H200	Width	Depth
PL1 35	PL2 35	300	500
PL1 36	PL2 36	300	600
PL1 38	PL2 38	300	800
PL1 45	PL2 45	400	500
PL1 46	PL2 46	400	600
PL1 64	PL2 64	600	400
PL1 65	PL2 65	600	500
PL1 66	PL2 66	600	600

Model		cabinet size (mm)	
H100	H200	Width	Depth
PL1 86	PL2 86	800	600
PL1 88	PL2 88	800	800
PL1 104	PL2 104	1000	400
PL1 105	PL2 105	1000	500
PL1 106	PL2 106	1000	600
PL1 108	PL2 108	1000	800
PL1 124	PL2 124	1200	400
PL1 125	PL2 125	1200	500



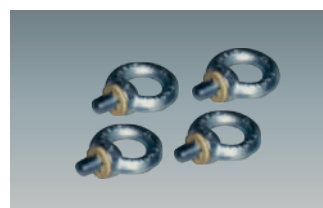
**WA 065 ring**

Model: WA 065

Material: Zinc-coated metal iron fixing on the top of the cabinet for lifting the cabinet more easily

Supply include: Rings

Pack: 4pcs/set



**Door Keep**

Model: DS001

Material: ABS, black color

Always keep the door in the straight level for AR8000, AR9000 cabinet

Supply include: door keep

Package: 1 piece



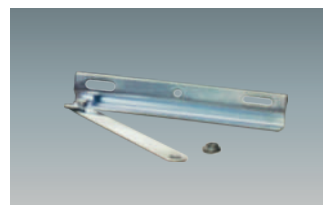
**Door stop**

Model: WA 100

Material: Manufactured in galvanized sheet steel 1.5mm, to keep the door in the open state for AR8000, AR9000 cabinet, when opening the doors

Supply include: door stop

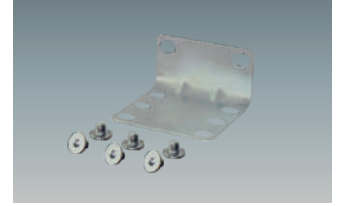
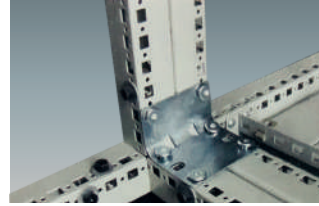
Package: 1 piece



**ACCESSORIES OF FLOOR STAND CABINET**

**Baying Bracket**

Model: WA 020  
 Manufactured in 1.5mm galvanized sheet steel with 32pcs fixing screws M8 x 8mm, for connection and combination in two cabinets  
 Supply include: Baying bracket with fixing accessories  
 Package: 4pcs/set



**Steel bolt anchor**

Model: WA010  
 Material: Steel iron zinc-plating, to combine or connect 2 cabinets, with inn-hexagon steel screws M6 x 10mm 12pcs  
 Supply include: steel bolt anchor with fixing accessories  
 Package: 6pcs/set



**Baying bracket**

Model: WA030  
 Material: Manufactured in 1.5mm, sheet steel, zinc- plating to combine or connect 2 cabinets with fixing screws M5 x 9mm 2pcs  
 Supply include: baying bracket with fixing accessories  
 Package: 1pcs/set



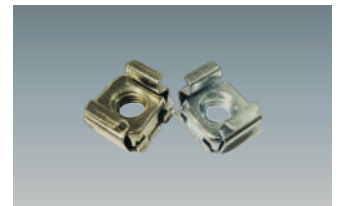
**WI300 baying ring**

Model: WI300  
 Material: Galvanized sheet steel 4.0mm by baying 2 cabinets on the top of cabinet  
 Supply include: baying ring with 8pcs screws M12  
 Pack: 4pcs/set with fixing accessories



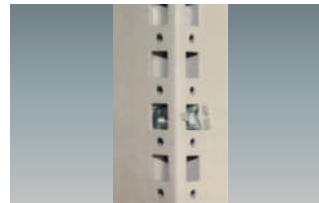
**Special nut - 1**

Model: SN-M6 or SN-M8  
 Material: Special designed nut use to install on AR9000 manufactured from zinc Alloy  
 Supply include: Special nut  
 Package: 50pcs/bag



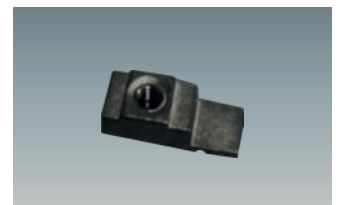
**Special nut - 2**

Model: TSN-M6 or TSN-M8  
 Material: Special designed nut use to install on AR9000 manufactured from zinc Alloy  
 Supply include: Special nut  
 Package: 50pcs/bag



**Insert nut**

Model: WA6 or WA8  
 Special designed nut use to install on AR9000 manufactured from zinc Alloy  
 Package: 50pcs/bag







**ACCESSORIES OF FLOOR STAND CABINET**

**LED cabinet lamp**

Model: LED025

Led 025 applies to all types of panels and accessories, especially in tight space. By using high-end LED technology, the lamp has a long service life. You can use non-slip rubber magnet to quickly locate on any steel parts. You can also choose mechanical fixation, Power output allows more than ten lamps are connected to each other.

Features

Wide voltage range

Longevity, Maintenance-free LED technology

Magnet screw fixation

ON/OFF light switch

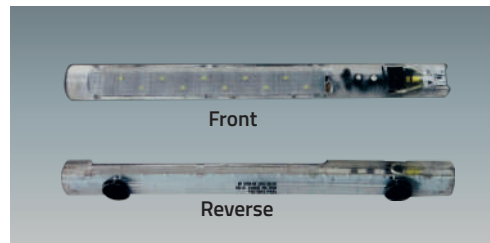
**Technical Data**

Power waste:	5W
Luminosity:	Same 75W light bulb
	L Radiation of LED, 120 6500K light; sunlight, color temperature: 6500K
Service life:	6000h + 20°C
Connect:	2pole connector AC: 2.5A/240VA, Color: White DC: 2.5A/60VDC, Color: Blue
Install:	(M5) Magnet fixation or screw fixation (M5) 250 mm Center
Casing:	Plastic, transparent
Dimensions:	Look at the picture
Operation/ storage temperature:	-30°C to + 60°C -40°C to + 85°C
Operation/ storage of Water:	90%RH (no dew)
Protection type/ Protection:	IP20I (double insulation)

Note: connectors and cables are not included and these parts can be purchased separately, can be based on customer requirements.

Magnet fixation	Screw fixation	Operating Voltage	Switch	Weight (approx)
02540. 1-00	02540. 1-01	24-48VDC	On/Off Light sensor	0.2Kg
02541. 0-00	02541. 0-00	100-240VDC 50/60Hz	On/Off Light sensor	0.2Kg

Applies to individual components (cable and connector)

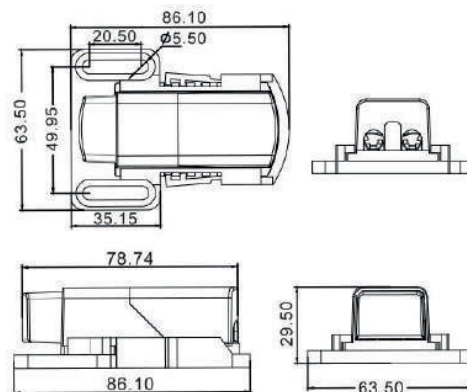
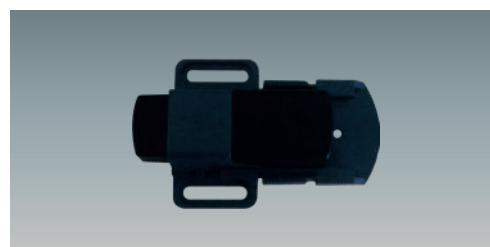


**Limit Switch for LED025 cabinet light**

Model: LSL-3

The door switch monitors the position of cabinet doors and is available in three versions. For example, it can be used for switching a light when opening a door (NC), or to activate a fan when closing a door (NO). The version with change-over contact (CO) can be used as a normally closed and/ or normally open contact. The wide mechanical adjustment range of the door switch LSL-3 offers versatile application areas: the housing is adjustable within a 35mm range, while the screw flange with a slotted hole offers an additional 21mm. The switching travel of the switch itself is another 8mm.

Max. switching capacity:	250VAC, 10(1.5) A
Service life:	VDE: >10, 000 cycles UL: > 6000 cycles
Connection:	4-pole clamp with strain relief, clamping torque 0.5Nm max.
Mounting	screw fixing (M5)
Casing:	Plastic according to UI94 V-0, gray/black
Dimensions:	87 x 64 x 30mm
Weight:	approx. 50g
Fitting position:	variable
Operating/ storage temperature:	-20°C to + 85°C (-4 to + 185°F)
Operating/ storage humidity:	Max. 90% RH (non-condensing)
Protection type:	IP 20





# Wall Mounting Box Enclosures



**SINGLE DOOR WALL MOUNT ENCLOSURE**

**Supply Include:**

Enclosure and door, mounting plate, lock system, gland plate, sealing gasket and fixing accessories.

Standard Configuration

Paint finish epoxy polyester powder coating textured finish

Color:RAL 7032 or RAL 7035

Protection degree: IP 66

Against mechanical impacts: IK 10

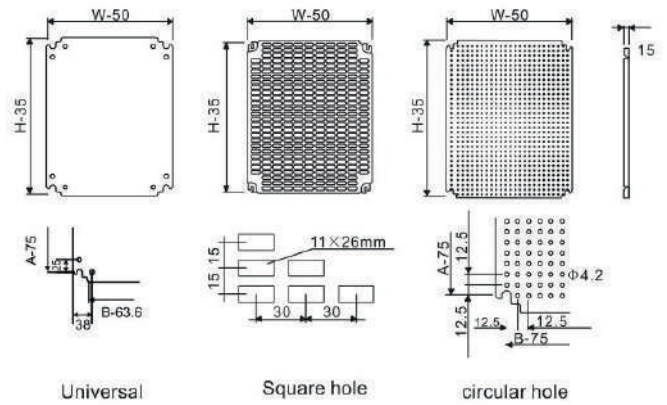
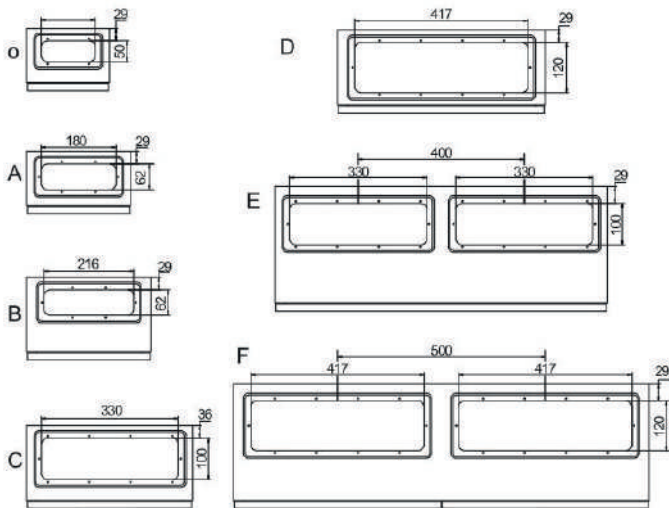
**Thickness:**

Enclosure & door: sheet steel 1.2mm till size

ST6 820 then 1.5mm

**Mounting Plate:**

zinc-coated steel 1.5mm till size ST6 820 then 2.0mm



Note: door hinges on the left for the left open door, door hinges on the right for the right open door

**Selection Table**

Model	W	H	D (mm)	No. of Lock	Gland Open
ST2 215	200	200	150	1	O
ST2 2515	200	250	150	1	O
ST25 2515	250	250	150	1	A
ST2 315	200	300	150	1	O
ST25 315	250	300	150	1	A
ST3 315	300	300	150	1	B
ST4 315	400	300	150	1	B
ST3 415	300	400	150	1	B
ST4 415	400	400	150	1	B
ST3 515	300	500	150	1	B
ST4 515	400	500	150	1	B
ST5 515	500	500	150	1	D
ST4 615	400	600	150	2	C
ST5 615	500	600	150	2	D
ST25 320	250	300	200	1	A
ST3 320	300	300	200	1	B
ST4 320	400	300	200	1	B
ST3 420	300	400	200	1	B
ST4 420	400	400	200	1	B
ST6 420	600	400	200	1	D
ST3 520	300	500	200	1	B
ST4 520	400	500	200	1	C

Model	W	H	D (mm)	No. of Lock	Gland Open
ST5 520	500	500	200	1	D
ST4 620	400	600	200	2	C
ST5 620	500	600	200	2	D
ST6 620	600	600	200	2	D
ST5 720	500	700	200	2	D
ST6 720	600	700	200	2	D
ST6 820	600	800	200	2	D
ST8 820	800	800	200	2	E
ST6 1020	600	1000	200	3	D
ST8 1020	800	1000	200	3	E
ST6 1220	600	1200	200	3	D
ST8 1220	800	1200	200	3	E
ST4 425	400	400	250	1	C
ST6 425	600	400	250	1	D
ST4 525	400	500	250	1	C
ST5 525	500	500	250	1	D
ST4 625	400	600	250	2	C
ST5 625	500	600	250	2	D
ST6 625	600	600	250	2	D
ST5 725	500	700	250	2	D
ST6 825	600	800	250	2	D
ST8 825	800	800	250	2	E

Model	W	H	D (mm)	No. of Lock	Gland Open
ST6 1025	600	1000	250	3	D
ST8 1025	800	1000	250	3	E
ST6 1225	600	1200	250	3	D
ST8 1225	800	1200	250	3	E
ST4 530	400	500	300	1	C
ST4 630	400	600	300	2	C
ST5 630	500	600	300	2	D
ST6 630	600	600	300	2	D
ST5 730	500	700	300	2	D
ST6 830	600	800	300	2	D
ST8 830	800	800	300	2	E
ST6 1030	600	1000	300	3	D
ST6 1230	600	1200	300	3	D
ST8 1030	800	1000	300	3	E
ST8 1230	800	1200	300	3	E
ST8 1430	800	1400	300	3	E
ST6 840	600	800	400	2	D
ST8 840	800	800	400	2	E
ST6 1040	600	1000	400	2	D
ST8 1040	800	1000	400	3	E
ST6 1240	600	1200	400	3	D
ST8 1240	800	1200	400	3	E
ST8 1440	800	1400	400	3	E

**DOUBLE DOOR WALL MOUNT ENCLOSURE**

**Supply Include:**

Enclosure and door with lock system, galvanized mounting plate, gland plate, sealing gasket and fixing accessories.

Standard Configuration

Paint finish epoxy polyester powder coating textured finish

Color:RAL 7032 or RAL 7035

Protection degree: IP 55

Against mechanical impacts: IK 10

Thickness:

Enclosure & door: sheet steel 1.5mm.

Mounting Plate:

Galvanized sheet steel - 2.0mm



**STD (Standard lock K2)**

Model	W	H	D (mm)	No. of Lock	Gland Open
STD8 620	800	600	200	2	E
STD8 625	800	600	250	2	E
STD8 630	800	600	300	2	E
STD8 640	800	600	400	2	E
STD10 620	1000	600	200	2	E
STD10 625	1000	600	250	2	E
STD10 630	1000	600	300	2	E
STD10 640	1000	600	400	2	E
STD12 620	1200	600	200	2	E
STD12 625	1200	600	250	2	E
STD12 630	1200	600	300	2	E
STD12 640	1200	600	400	2	E
STD8 820	800	800	200	2	F
STD8 825	800	800	250	2	F
STD8 830	800	800	300	2	F
STD8 840	800	800	400	2	F
STD10 820	1000	800	200	2	F
STD10 825	1000	800	250	2	F
STD10 830	1000	800	300	2	F
STD10 840	1000	800	400	2	F
STD12 820	1200	800	200	2	F
STD12 825	1200	800	250	2	F
STD12 830	1200	800	300	2	F
STD12 840	1200	800	400	2	F
STD10 1020	1000	1000	200	2	F
STD10 1025	1000	1000	250	2	F
STD10 1030	1000	1000	300	2	F
STD10 1040	1000	1000	400	2	F
STD12 1020	1200	1000	200	2	F
STD12 1025	1200	1000	250	2	F
STD12 1030	1200	1000	300	2	F
STD12 1040	1200	1000	400	2	F
STD10 1220	1000	1200	200	2	F
STD10 1225	1000	1200	250	2	F
STD10 1230	1000	1200	300	2	F
STD10 1240	1000	1200	400	2	F

**STDD (Rod Center Lock) with lock MS820**

Model	W	H	D (mm)	No. of Lock	Gland Open
STDD8 620	800	600	200	1	E
STDD8 625	800	600	250	1	E
STDD8 630	800	600	300	1	E
STDD8 640	800	600	400	1	E
STDD10 620	1000	600	200	1	E
STDD10 625	1000	600	250	1	E
STDD10 630	1000	600	300	1	E
STDD10 640	1000	600	400	1	E
STDD12 620	1200	600	200	1	E
STDD12 625	1200	600	250	1	E
STDD12 630	1200	600	300	1	E
STDD12 640	1200	600	400	1	E
STDD8 820	800	800	200	1	F
STDD8 825	800	800	250	1	F
STDD8 830	800	800	300	1	F
STDD8 840	800	800	400	1	F
STDD10 820	1000	800	200	1	F
STDD10 825	1000	800	250	1	F
STDD10 830	1000	800	300	1	F
STDD10 840	1000	800	400	1	F
STDD12 820	1200	800	200	1	F
STDD12 825	1200	800	250	1	F
STDD12 830	1200	800	300	1	F
STDD12 840	1200	800	400	1	F
STDD10 1020	1000	1000	200	1	F
STDD10 1025	1000	1000	250	1	F
STDD10 1030	1000	1000	300	1	F
STDD10 1040	1000	1000	400	1	F
STDD12 1020	1200	1000	200	1	F
STDD12 1025	1200	1000	250	1	F
STDD12 1030	1200	1000	300	1	F
STDD12 1040	1200	1000	400	1	F
STDD10 1220	1000	1200	200	1	F
STDD10 1225	1000	1200	250	1	F
STDD10 1230	1000	1200	300	1	F
STDD10 1240	1000	1200	400	1	F

### GLAND BOX

GB series box can be used as the gland box of the ST wall mount enclosure,  
 Material: sheet steel 1.2mm, surface finish: epoxy polyester powder coating  
 textured finish Color: RAL 7032 or RAL 7035

Model	W	Size (mm)	
		H	D
GB432	300	400	200
GB532	300	500	200
GB632	300	600	200
GB8325	300	800	250
GB4252	250	400	200
GB5252	250	500	200
GB6252	250	600	200
GB82525	250	800	250
GB422	200	400	200
GB522	200	500	200
GB1033	300	1000	300

more size to be request to the clients



### PLEXIGLASS DOOR WALL MOUNT ENCLOSURE (STP)

Supply include: enclosure and door with glass with lock system, galvanized mounting plate, gland plate, sealing gasket and fixing accessories.

Color: RAL 7032 or RAL 7035, paint finish epoxy polyester powder coating textured finish.

Protection degree: IP 66

Against mechanical impacts: IK10

Thickness: enclosure & door - Sheet steel 1.2mm till size STP6 820 then 1.5mm, mounting plate - galvanized steel 1.5mm till size STP6 820 then 2.0mm, plexiglass door 4.0mm

Model	W x H x D mm	No. of lock
STP3 415	300 x 400 x 150	1
STP3 420	300 x 400 x 200	1
STP4 315	400 x 300 x 150	1
STP4 420	400 x 400 x 200	1
STP4 520	400 x 500 x 200	1
STP4 620	400 x 600 x 200	2
STP5 520	500 x 500x 200	1
STP5 720	500 x 700 x 200	2
STP5 725	500 x 700 x 250	2
STP6 420	600 x 400 x 200	1

Model	W x H x D mm	No. of lock
STP6 620	600 x 600 x 200	2
STP6 625	600 x 600 x 250	2
STP6 630	600 x 600 x 300	2
STP6 820	600 x 800 x 200	2
STP6 825	600 x 800 x 250	2
STP6 830	600 x 800 x 300	2
STP6 1230	600 x 1200x 300	3
STP8 830	800 x 800 x 300	2
STP8 1030	800 x 1000 x 300	3
STP8 1230	800 x 1200 x 300	3



### INNER DOOR WALL MOUNT ENCLOSURE (STI)

Supply include: enclosure and door & inner door, with lock system, galvanized mounting plate, gland plate, sealing gasket and fixing accessories.

Color: RAL 7032 or RAL 7035, paint finish epoxy polyester powder coating textured finish.

Protection degree: IP 66

Against mechanical impacts: IK10

Thickness: enclosure, door & inner door - Sheet steel 1.2mm till size STI6 820 then 1.5mm, mounting plate - galvanized steel 1.5mm till size STI6 820 then 2.0mm, inner door 1.2mm

Model	W x H x D mm	No. of lock
STI3 415	300 x 400 x 150	1
STI3 420	300 x 400 x 200	1
STI4 315	400 x 300 x 150	1
STI4 420	400 x 400 x 200	1
STI4 520	400 x 500 x 200	1
STI4 620	400 x 600 x 200	2
STI5 520	500 x 500x 200	1
STI5 720	500 x 700 x 200	2
STI5 725	500 x 700 x 250	2
STI6 420	600 x 400 x 200	1

Model	W x H x D mm	No. of lock
STI6 620	600 x 600 x 200	2
STI6 625	600 x 600 x 250	2
STI6 630	600 x 600 x 300	2
STI6 820	600 x 800 x 200	2
STI6 825	600 x 800 x 250	2
STI6 830	600 x 800 x 300	2
STI6 1230	600 x 1200x 300	3
STI8 830	800 x 800 x 300	2
STI8 1030	800 x 1000 x 300	3
STI8 1230	800 x 1200 x 300	3



**TOUGHENED GLASS DOOR + INNER DOOR WALL MOUNT ENCLOSURE (STIP)**

Supply include: enclosure and door with glass, inner door, with lock system, galvanized mounting plate, gland plate, sealing gasket and fixing accessories.

Color: RAL 7032 or RAL 7035, paint finish epoxy polyester powder coating textured finish.

Protection degree: IP 66

Against mechanical impacts: IK10

Thickness: enclosure & door - Sheet steel 1.2mm till size STIP6 820 then 1.5mm, mounting plate - Zinc-coated steel 1.5mm till size STIP6 820 then 2.0mm, plexiglass door 4.0mm, inner door 1.2mm

Model	W x H x D mm	No. of lock
STIP3 415	300 x 400 x 150	1
STIP3 420	300 x 400 x 200	1
STIP4 315	400 x 300 x 150	1
STIP4 420	400 x 400 x 200	1
STIP4 520	400 x 500 x 200	1
STIP4 620	400 x 600 x 200	2
STIP5 520	500 x 500x 200	1
STIP5 720	500 x 700 x 200	2
STIP5 725	500 x 700 x 250	2
STIP6 420	600 x 400 x 200	1

Model	W x H x D mm	No. of lock
STIP6 620	600 x600 x 200	2
STIP6 625	600 x 600 x 250	2
STIP6 630	600 x 600 x 300	2
STIP6 820	600 x 800 x 200	2
STIP6 825	600 x 800 x 250	2
STIP6 830	600 x 800 x300	2
STIP6 1230	600 x 1200x 300	3
STIP8 830	800 x 800 x 300	2
STIP8 1030	800 x 1000 x 300	3
STIP8 1230	800 x 1200 x 300	3

*more size to be request to the clients*



**ACCESSORIES OF WALL MOUNT ENCLOSURE**

**Metal lock**



**Rain-proof cover for lock**



**Locks**



**Plinth for wall mount enclosure**

100mm high plinth can be used for ST boxes.

Material: Sheet steel

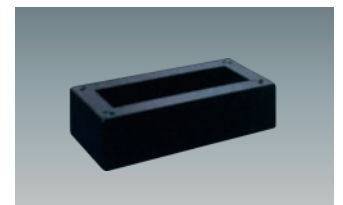
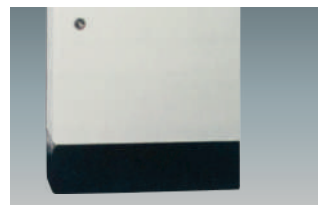
Color: RAL6022

Model	Cabinet size (mm)	
	W	D
TT42	400	200
TT52	500	200
TT62	600	200
TT82	800	200
TT102	1000	200
TT122	1200	200

Model	Cabinet size (mm)	
	W	D
TT425	400	250
TT525	500	250
TT625	600	250
TT825	800	250
TT1025	1000	250
TT1225	1200	250

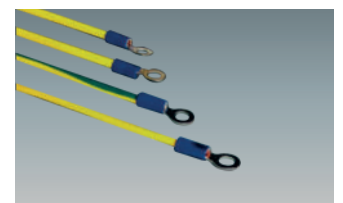
Model	Cabinet size (mm)	
	W	D
TT43	400	300
TT53	500	300
TT63	600	300
TT83	800	300
TT103	1000	300
TT123	1200	300

*more size to be request to the clients*



**Earth wire for enclosure**

Model	S (mm <sup>2</sup> )	Length (mm)	Diameter of rings (mm)
TJ-CM6130	6	130	6.4
TJ-CM6160	6	160	6.4
TJ-CM6168	6	160	8.3
TJ-CM1025	10	250	6.4
TJ-CM2535	25	350	8.3



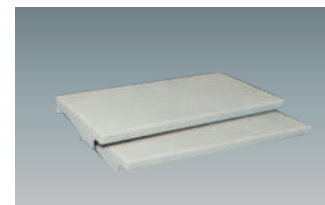
**ACCESSORIES OF WALL MOUNT ENCLOSURE**

**Canopy (roof)**

Recommended for outdoor installation - Manufactured in 1.2mm sheet steel.  
 Surface finish: AKURA standard cycle thermosetting epoxy polyester powder coating in textured for outdoor installation.  
 we suggest a specific painting Color: RAL 7032 or RAL 7035

Model	For box size (mm)	
	W	D
TT1 03	300	150
TT2 03	300	200
TT0 04	400	150
TT1 04	400	200
TT2 04	400	250
TT3 04	400	300
TT0 05	500	150
TT1 05	500	200
TT2 05	500	250

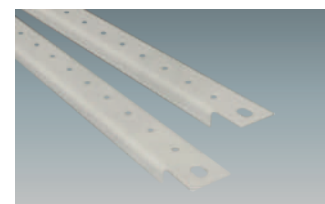
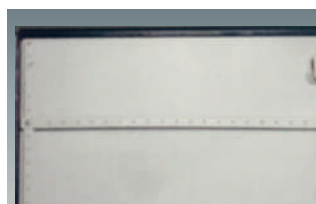
Model	For box size (mm)	
	W	D
TT3 05	500	300
TT0 06	600	200
TT1 06	600	250
TT2 06	600	300
TT3 06	600	400
TT0 08	800	200
TT1 08	800	250
TT2 08	800	300
TT3 08	800	400



**Door rail (crosspiece for door)**

To be fixed on the vertical rail of the door to simplify of cable ducts. Manufactured in 1.2mm sheet steel. Zinc plated passivated with 4.2mm diameter holes punched in 25mm pinch patten. Pack: 1 piece with fixing material

Model	Width (mm) Box
WC 001	300
WC 002	400
WC 003	500
WC 004	600
WC 005	800



**Door stop: WA060**

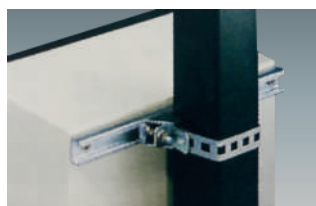
Holds the door at 90° to avoid accidental closing. Manufactured in 2mm and 3mm sheet steel zinc plated passivated can be used on ST boxes till size ST6 820.  
 Pack of 1 piece with fixing material Screw M6 x 12 2pcs, nut M6 2pcs  
 Model: WA 060



WA 060

**Upright post fixing: WA 080**

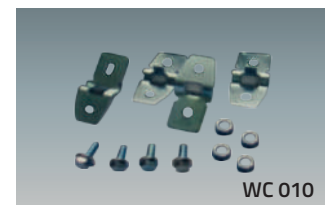
Model: WA 080  
 WA 080 can be used to fix the wall mount enclosure onto upright posts easily, the width of the boxes should be no more than 600mm  
 Material: sheet steel, galvanized steel  
 Packing: 2pcs/set per pack (include 4pcs nuts & bolts)  
 Length of belt 600mm



WA 080

**Wall mount bracket : WC 010**

Manufactured in 4mm sheet steel zinc plated passivated.  
 Pack of 4 pieces with fixing material  
 Model: WC 010  
 For box model ST, STI, STIP, STIP wall mount enclosure



WC 010

**Wall mount bracket : WTC 010**

Manufactured in 4mm sheet steel zinc plated passivated.  
 Pack of 4 pieces with fixing material  
 For the box model TB, TL, TBS, TL-G terminal box  
 Package: 4pcs/set  
 Model: WTC 010

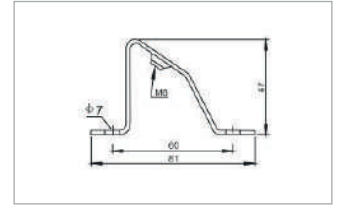


WTC 010

**ACCESSORIES OF WALL MOUNT ENCLOSURE**

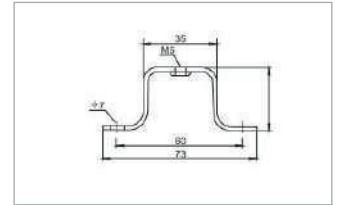
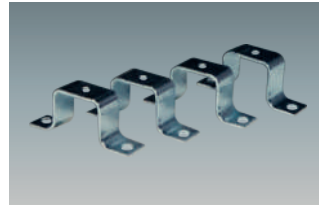
**WL02 45° bracket**

WL 02 brackets can be used to slope the DIN rails into 45,  
 1 pack of 20 pieces  
 Model: WL 02

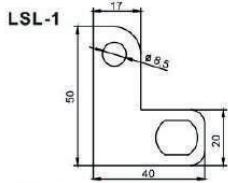


**WS02 bracket**

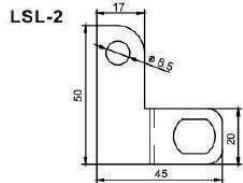
WS 02 brackets can be used to upraise the DIN rails,  
 1 pack of 20 pieces  
 Model: WL 02



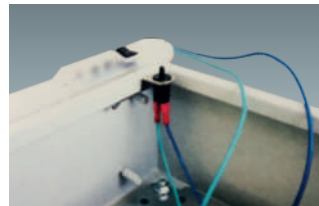
**Limit switch for light**



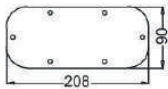
Pack: 1 piece  
 Model: LSL-1, for box without door frame



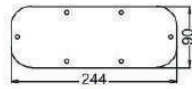
Pack: 1 piece  
 Model: LSL-2, for box with door frame



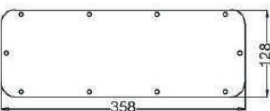
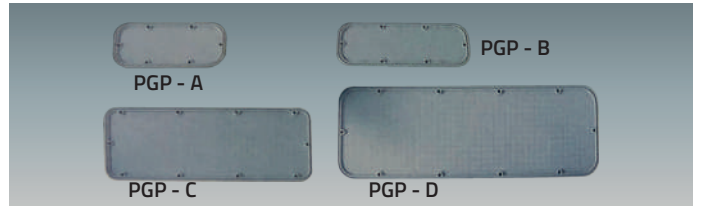
**Plastic gland plate**



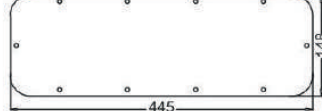
Model: PGP-A  
 for box WidthXDepth 250X150mm



Model: PGP-B  
 for box WidthXDepth 300X150/200mm



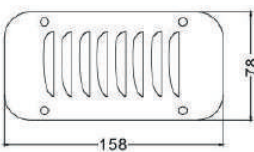
Model: PGP-C  
 for box WidthXDepth 400X200/250mm



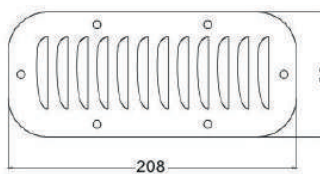
Model: PGP-D  
 for box WidthXDepth 500X200/250mm

**Louver plates (ventilation plate)**

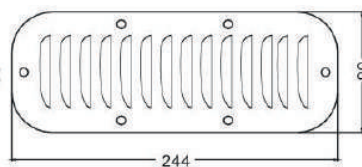
To be fitted on any surface of the enclosure for internal ventilation. Supply include 1 piece louver plate and fixing material, gasket Color: RAL7032 textured finish



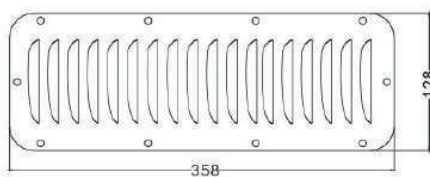
Model: GP-O



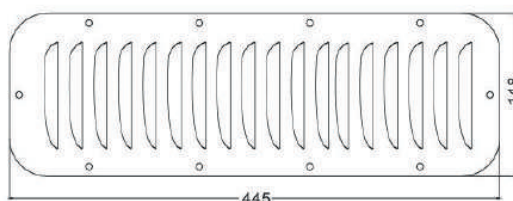
Model: GP-A



Model: GP-B



Model: GP-C



Model: GP-D

unit:mm







# Distribution Boards



**MCB Box**

**MCB box surface type or flush type**

AS & AE series boxes are AKURA specially designed for MCBs. This kind of surface & flush mounting boxes can assemble 16P & 24P MCBs each row, knock-outs provided on all sides

Material: Sheet steel 1.0mm

Protection degree: IP54

Surface finish: epoxy polyester powder coating textured finish

Color: RAL 7035

Supply include: body with din rails, front frame & door with lock system

Pack: 1 piece



Surface Type	W	Door (mm)		Row	No. of breakers
		H	D		
AS1 16	440	300	115	1	X16p
AS2 16	440	450	115	2	X16p
AS3 16	440	600	115	3	X16p
AS4 16	440	750	115	4	X16p
AS5 16	440	900	115	5	X16p
AS6 16	440	1050	115	6	X16p
AS4 24	585	750	115	4	X24p
AS5 24	585	900	115	5	X24p

Flush Type	W	Door (mm)		Row	No. of breakers
		H	D		
AE1 16	465	325	115	1	X16p
AE2 16	465	475	115	2	X16p
AE3 16	465	625	115	3	X16p
AE4 16	465	775	115	4	X16p
AE5 16	465	925	115	5	X16p
AE6 16	465	1075	115	6	X16p
AE4 24	610	775	115	4	X24p
AE5 24	610	925	115	5	X24p

**MCB box surface type**

AS series boxes are AKURA specially designed for MCBs. This kind of surface mounting boxes can assemble 13P & 18P MCBs each row. surface mounting confirming to IP54, knock-outs provided on all sides

Material: Sheet steel 1.0mm

Surface finish: epoxy polyester powder coating textured finish

Color: RAL 7035

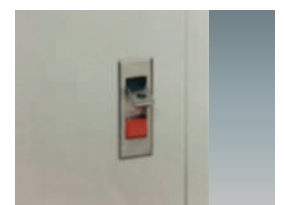
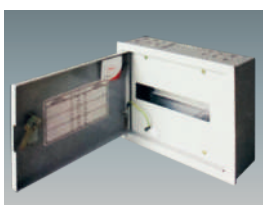
Supply include: body with din rails, front frame & door with lock system, earth wire

Pack: 1 piece

Protection degree: IP54

Lock model: MS720-1H

Surface Type	W	Door (mm)		Row	No. of breakers
		H	D		
AS1 13	355	275	110	1	X13p
AS2 13	355	380	110	2	X13p
AS3 13	355	530	110	3	X13p
AS4 13	355	680	110	4	X13p
AS5 13	355	830	110	5	X13p
AS1 18	455	275	110	1	X18p
AS2 18	455	380	110	2	X18p
AS3 18	455	530	110	3	X18p
AS4 18	455	680	110	4	X18p
AS5 18	455	830	110	5	X18p



**MCB Box**

**Modular kit for steel wall mount box**

MDST modular kit boxes are AKURA specially designed for MCBs. This kind of surface mounting boxes can assemble 9P & 15P, 21P, 26P, 38P MCBs each row or adjust by your own.

Material: Sheet steel 1.2mm

Surface finish: epoxy polyester powder coating textured finish

Color: RAL 7035 or RAL 7032

Model: MDST

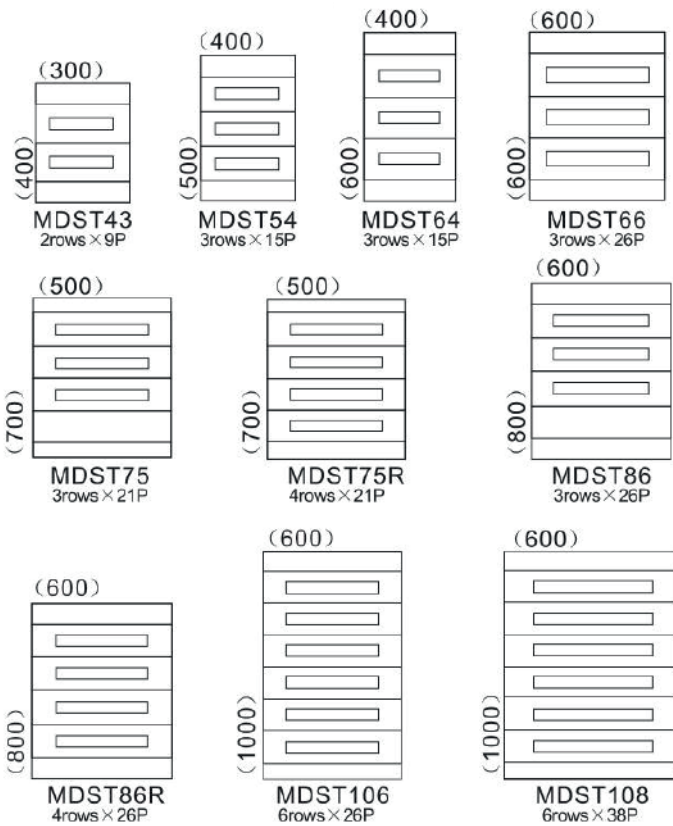
Supply include: MDST modular kit

Pack: 1 piece

Not include the outside box



Model	Door (mm)		No. of breakers	Breakers qty PCS	No. of row
	W	H			
MDST43	300	400	2rowsX9p	18	2
MDST54	400	500	3rowsX15p	45	3
MDST64	400	600	3rowsX15p	45	3
MDST66	600	600	3rowsX26p	78	3
MDST75	500	700	3rowsX21p	60	4
MDST75R	500	700	4rowsX21p	80	4
MDST86	600	800	3rowsX26p	78	4
MDST86R	600	800	4rowsX26p	104	4
MDST106	600	1000	6rowsX26p	158	6
MDST108	800	1000	6rowsX38p	222	6





# Terminal Boxes



## Steel Terminal Box

### TL-G series - with gland hole

Supply include: Enclosure & cover (Sheet steel 1.2mm), sealing gasket and fixing accessories, gland holes & gland plates

Paint finish: epoxy polyester powder coating textures finish

Color: RAL 7032 or RAL 7035

Protection degree: IP66      Against mechanical impacts: IK10

galvanized mounting plate to be supplied separately

Model	W x H x D (mm)	Model	W x H x D (mm)
TL301512 - G	300 x 150 x 120	TL503012 - G	500 x 300 x 120
TL302012 - G	300 x 200 x 120	TL602012 - G	600 x 200 x 120
TL303012 - G	300 x 300 x 120	TL603012 - G	600 x 300 x 120
TL402012 - G	400 x 200 x 120	TL604012 - G	600 x 400 x 120
TL404012 - G	400 x 400 x 120	TL802012 - G	800 x 200 x 120
TL502012 - G	500 x 200 x 120	TL804012 - G	800 x 400 x 120



### TL series - No gland hole

Supply include: Enclosure & cover (Sheet steel 1.2mm), sealing gasket and fixing accessories

Paint finish: epoxy polyester powder coating textures finish

Color: RAL 7032 or RAL 7035

Protection degree: IP66      Against mechanical impacts: IK10

galvanized mounting plate to be supplied separately

Model	W x H x D (mm)	Model	W x H x D (mm)	Model	W x H x D (mm)
TL15158	150 x 150 x 80	TL30208	300 x 200 x 80	TL502012	500 x 200 x 120
TL151512	150 x 150 x 120	TL302012	300 x 200 x 120	TL503012	500 x 300 x 120
TL201512	200 x 150 x 120	TL401512	400 x 150 x 120	TL602012	600 x 200x 120
TL20208	200 x 200 x 80	TL40208	400 x 200 x 80	TL603012	600 x 300 x 120
TL30158	300 x 150 x 80	TL403012	400 x 300 x 120	TL802012	800 x 200 x 120
TL301512	300 x 150 x 120	TL404012	400 x 400 x 120	TL804012	800 x 400 x 120



### TB series 180° hinges with lock system

Supply include: Enclosure with gland holes, cover with sealing gasket and fixing accessories, lock system

Paint finish: epoxy polyester powder coating textures finish

Color: RAL 7032 or RAL 7035

Protection degree: IP66      Against mechanical impacts: IK10

galvanized mounting plate to be supplied separately

Model	W x H x D (mm)	Model	W x H x D (mm)
TB15158	150 x 150 x 80	TB203012	200 x 300 x 120
TB15308	150 x 300 x 80	TB204012	200 x 400 x 120
TB20208	200 x 200 x 80	TB205012	200 x 500 x 120
TB20308	200 x 300 x 80	TB303012	300 x 300 x 120
TB20408	200 x 400 x 80	TB304012	300 x 400 x 120
TB151512	150 x 150 x 120	TB3040155	300 x 400 x 155
TB153012	150 x 300 x 120	TB3060155	300 x 600 x 155
TB202012	200 x 200 x 120	TB3080155	300 x 800 x 155



### TBS series 180° hinges and 180° opening

Supply include: Enclosure with gland holes, cover with sealing gasket and fixing accessories

Paint finish: epoxy polyester powder coating textures finish

Color: RAL 7032 or RAL 7035

Protection degree: IP66      Against mechanical impacts: IK10

galvanized mounting plate to be supplied separately

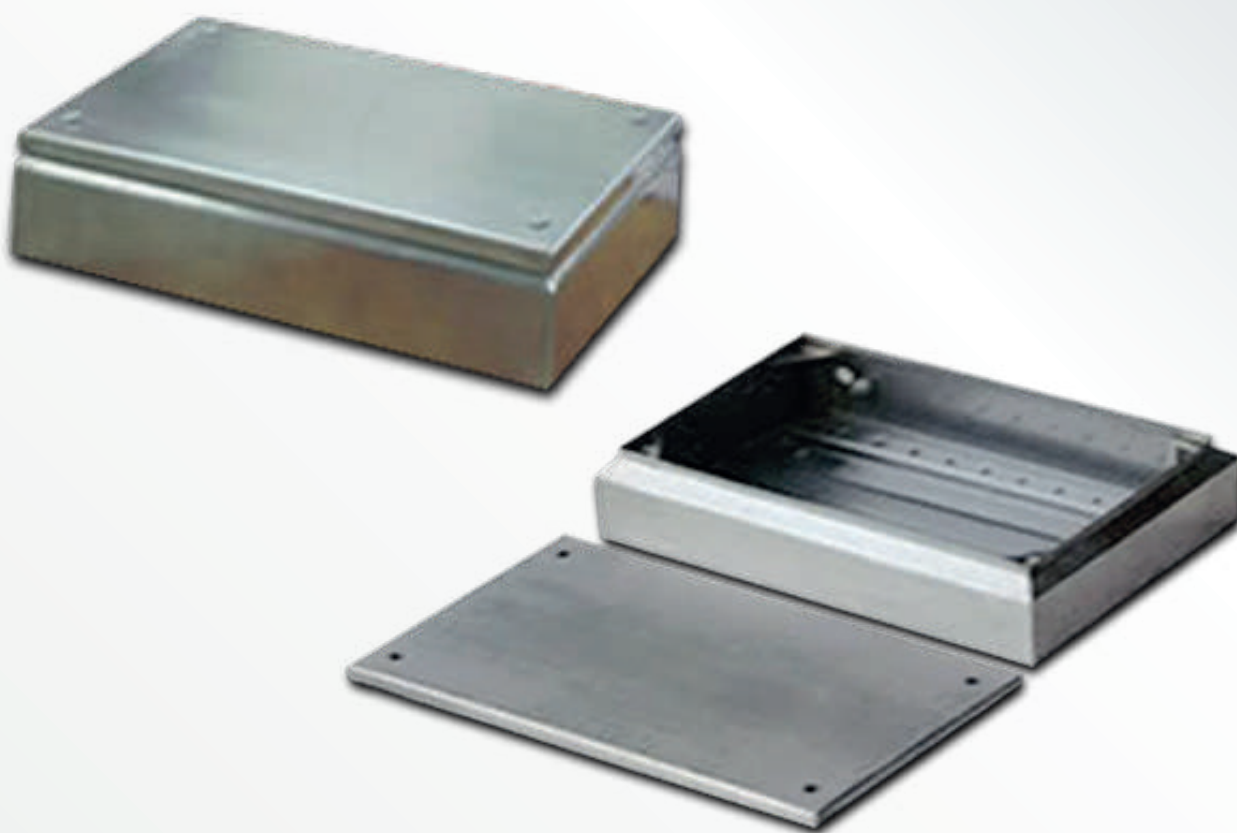
Model	W x H x D (mm)	Model	W x H x D (mm)
TBS15158	150 x 150 x 80	TBS203012	200 x 300 x 120
TBS15308	150 x 300 x 80	TBS204012	200 x 400 x 120
TBS20208	200 x 200 x 80	TBS205012	200 x 500 x 120
TBS20308	200 x 300 x 80	TBS303012	300 x 300 x 120
TBS20408	200 x 400 x 80	TBS304012	300 x 400 x 120
TBS151512	150 x 150 x 120	TBS3040155	300 x 400 x 155
TBS153012	150 x 300 x 120	TBS3060155	300 x 600 x 155
TBS202012	200 x 200 x 120		



more size to be request to the clients



# Stainless Steel Terminal Boxes



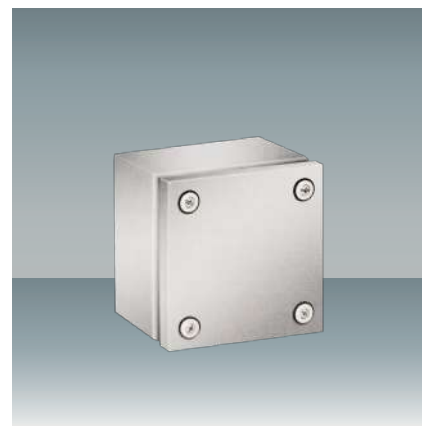
### Stainless steel terminal box - TLX

Material: boxes and cover manufactured from thickness 1.2mm, AISI 304 (AISI316L on request) Stainless steel cover fixing with stainless steel screws.  
 Protection degree: IP66 Impact resistance IK10

**Supply include:**

enclosure & cover (sheet steel 1.2mm), sealing gasket and fixing accessories  
 Galvanized mounting plate to be offered separately  
 Wall mount brackets to be offered separately  
 Din-rail to be offered separately

Model	W x H x D mm	Model	W x H x D mm	Model	W x H x D mm
TLX15158	150 x 150 x 80	TLX30208	300 x 200 x 80	TLX502012	500 x 200 x 120
TLX151512	150 x 150 x 120	TLX302012	300 x 200 x 120	TLX503012	500 x 300 x 120
TLX201512	200 x 150 x 120	TLX401512	400 x 150 x 120	TLX602012	600 x 200 x 120
TLX 20208	200 x 200 x 80	TLX40208	400 x 200 x 80	TLX603012	600 x 300 x 120
TLX30158	300 x 150 x 80	TLX403012	400 x 300 x 120	TLX802012	800 x 200 x 120
TLX301512	300 x 150 x 120	TLX404012	400 x 400 x 120	TLX804012	800 x 400 x 120



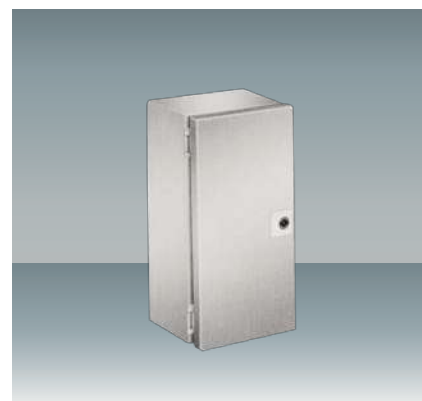
### Stainless steel terminal box - TBX

Material: boxes and door manufactured from thickness 1.2mm, AISI 304 (AISI316L on request) Stainless steel door with lock model K3 - X, 180° stainless steel hinges  
 Protection degree: IP66 Impact resistance IK10

**Supply include:**

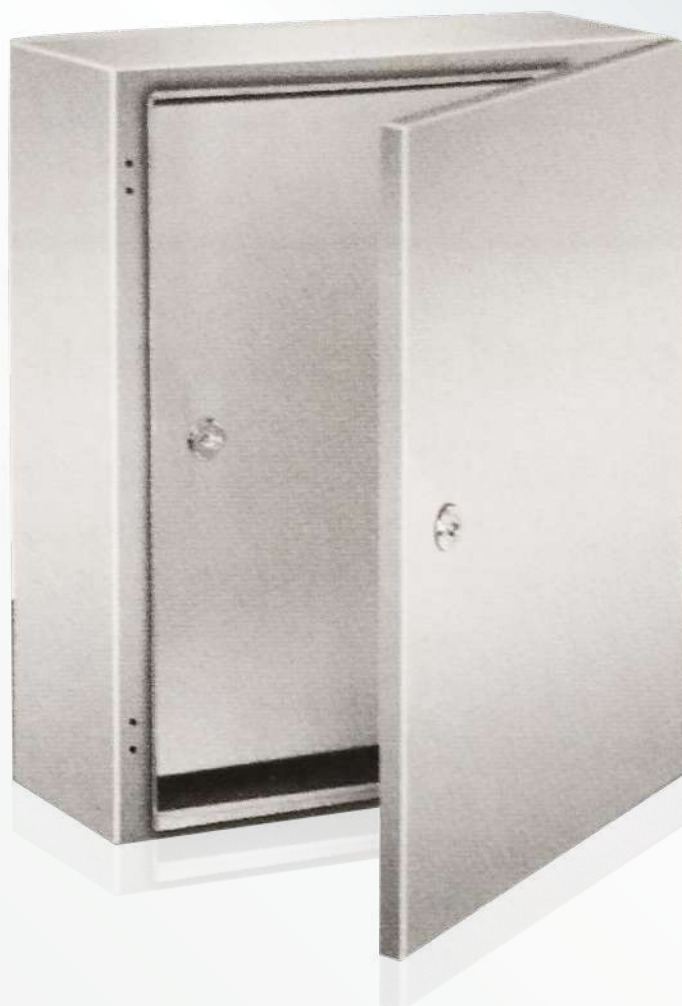
enclosure, door with sealing gasket and fixing accessories, lock system, stainless steel hinges  
 Galvanized mounting plate to be offered separately Wall mount brackets to be offered separately  
 Din-rail to be offered separately

Model	W x H x D mm	Model	W x H x D mm
TBX15158	150 x 150 x 80	TBX203012	200 x 300 x 120
TBX15308	150 x 300 x 80	TBX204012	200 x 400 x 120
TBX20208	200 x 200 x 80	TBX205012	200 x 500 x 120
TBX20308	200 x 300 x 80	TBX303012	300 x 300 x 120
TBX20408	200 x 400 x 80	TBX304012	300 x 400 x 120
TBX151512	150 x 150 x 120	TBX3040155	300 x 400 x 155
TBX153012	150 x 300 x 120	TBX3060155	300 x 600 x 155
TBX202012	200 x 200 x 120	TBX3080155	300 x 800 x 155





## **Stainless Steel Wall Mounting Box Enclosures**





**STAINLESS STEEL WALL MOUNT ENCLOSURE**

Material: enclosure and door manufactured from AISI304 sheet steel (AISI316L on request). Flat mounting plate manufactured from galvanized sheet steel. Hinges in stainless steel. Thickness of sheet steel: enclosure & door: Sheet steel 1.2mm till size STX6 820, then 1.5mm. Thickness of mounting plate: zinc coated steel 1.5mm till size STX6 820 then 2.0mm.

**Stainless steel box with single door-STX**

**Supply include:**

enclosure body, door with lock LK-5 & galvanized mounting plate, seal gasket and fixing accessories, Wall mount brackets 4pcs/ set to be offered separately.

Protection degree: IP66 Impact resistance IK10

Model	W x H x D mm	Model	W x H x D mm	Model	W x H x D mm
STX2 215	200 x 200 x 150	STX4 520	400 x 500 x 200	STX6 825	600 x 800 x 250
STX2 2515	200 x 250 x 150	STX4 620	400 x 600 x 200	STX6 1025	600 x 1000x 250
STX25 2515	250 x 250 x 150	STX5 520	500 x 500 x 200	STX8 1225	800 x 1200 x 250
STX2 315	200 x 300 x 150	STX5 725	500 x 700 x 250	STX6 830	600 x 800 x 300
STX25 315	250 x 300 x 150	STX6 420	600 x 400 x 200	STX6 1230	600 x 1200 x 300
STX3 315	300 x 300 x 150	STX6 620	600 x 600 x 200	STX8 830	800 x 800 x 300
STX3 415	300 x 400 x 150	STX6 625	600 x 600 x 250	STX8 1030	800 x 1000 x 300
STX3 420	300 x 400 x 200	STX6 630	600 x 600 x 300	STX8 1230	800 x 1200x 300
STX3 515	300 x 500 x 150	STX6 820	600 x 800 x 200	STX6 840	600 x 800 x 400
STX4 315	400 x 300 x 150	STX6 1020	600 x 1000 x 200	STX8 1440	800 x 1400 x 400
STX4 420	400 x 200 x 200	STX8 1020	800 x 1000 x 200		



more size to be request to the clients

**Stainless steel box with inner door - STXI**

**Supply include:**

enclosure body, door with lock LK-5 & galvanized mounting plate, seal gasket and fixing accessories, Inner door with lock. Wall mount brackets 4pcs/ set to be offered separately.

Protection degree: IP66 Impact resistance IK10

Model	W x H x D mm	Model	W x H x D mm	Model	W x H x D mm
STXI3 415	300 x400 x 150	STXI6 420	600 x 400 x 200	STXI8 1225	800 x 1200 x 250
STXI3 420	300 x 400 x 200	STXI6 620	600 x 600 x 200	STXI6 830	600 x 800 x 300
STXI3 515	300 x 500 x 150	STXI6 625	600 x 600 x 250	STXI6 1230	600 x 1200 x 300
STXI4 315	400 x 300 x 150	STXI6 630	600 x 600 x 300	STXI8 830	800 x 800 x 300
STXI4 420	400 x 200 x 200	STXI6 820	600 x 800 x 200	STXI8 1030	800 x 1000 x 300
STXI4 520	400 x 500 x 200	STXI6 1020	600 x 1000 x 200	STXI8 1230	800 x 1200 x 300
STXI4 620	400 x 600 x 200	STXI8 1020	800 x 1000 x 200	STXI6 840	600 x 800 x 400
STXI5 520	500 x 500 x 200	STXI6 825	600 x 800 x 250	STXI8 1440	800 x 1400 x 400
STXI5 725	500 x 700 x 250	STXI6 1025	600 x 1000x 250		



more size to be request to the clients

**Stainless steel box with inner door + toughened glass door - STXIP**

**Supply include:**

enclosure body, toughened glass door thickness 5.0mm door with lock LK-5 & galvanized mounting plate, seal gasket and fixing accessories, Inner door with lock. Wall mount brackets 4pcs/ set to be offered separately.

Protection degree: IP66 Impact resistance IK10

Model	W x H x D mm	Model	W x H x D mm	Model	W x H x D mm
STXIP3 415	300 x400 x 150	STXIP6 420	600 x 400 x 200	STXIP8 1225	800 x 1200 x 250
STXIP3 420	300 x 400 x 200	STXIP6 620	600 x 600 x 200	STXIP6 830	600 x 800 x 300
STXIP3 515	300 x 500 x 150	STXIP6 625	600 x 600 x 250	STXIP6 1230	600 x 1200 x 300
STXIP4 315	400 x 300 x 150	STXIP6 630	600 x 600 x 300	STXIP8 830	800 x 800 x 300
STXIP4 420	400 x 200 x 200	STXIP6 820	600 x 800 x 200	STXIP8 1030	800 x 1000 x 300
STXIP4 520	400 x 500 x 200	STXIP6 1020	600 x 1000 x 200	STXIP8 1230	800 x 1200 x 300
STXIP4 620	400 x 600 x 200	STXIP8 1020	800 x 1000 x 200	STXIP6 840	600 x 800 x 400
STXIP5 520	500 x 500 x 200	STXIP6 825	600 x 800 x 250	STXIP8 1440	800 x 1400 x 400
STXIP5 725	500 x 700 x 250	STXIP6 1025	600 x 1000x 250		



more size to be request to the clients

**STAINLESS STEEL WALL MOUNT ENCLOSURE**

**Stainless steel box with toughened glass door - STXP**

**Supply include:**

enclosure body, toughened glass door thickness 5.0mm door with lock LK-5 & galvanized mounted plate, seal gasket and fixing accessories, Wall mount brackets 4pcs/ set to be offered separately. Protection degree: IP66 Impact resistance IK10

Model	W x H x D mm	Model	W x H x D mm	Model	W x H x D mm
STXP3 415	300 x 400 x 150	STXP6 420	600 x 400 x 200	STXP8 1225	800 x 1200 x 250
STXP3 420	300 x 400 x 200	STXP6 620	600 x 600 x 200	STXP6 830	600 x 800 x 300
STXP3 515	300 x 500 x 150	STXP6 625	600 x 600 x 250	STXP6 1230	600 x 1200 x 300
STXP4 315	400 x 300 x 150	STXP6 630	600 x 600 x 300	STXP8 830	800 x 800 x 300
STXP4 420	400 x 200 x 200	STXP6 820	600 x 800 x 200	STXP8 1030	800 x 1000 x 300
STXP4 520	400 x 500 x 200	STXP6 1020	600 x 1000 x 200	STXP8 1230	800 x 1200 x 300
STXP4 620	400 x 600 x 200	STXP8 1020	800 x 1000 x 200	STXP6 840	600 x 800 x 400
STXP5 520	500 x 500 x 200	STXP6 825	600 x 800 x 250	STXP8 1440	800 x 1400 x 400
STXP5 725	500 x 700 x 250	STXP6 1025	600 x 1000x 250		



**Stainless steel box with double door - STXD**

**Supply include:**

enclosure body, door with lock LK-5 & galvanized mounted plate, seal gasket and fixing accessories, Wall mount brackets 4pcs/ set to be offered separately. Protection degree: IP66 Impact resistance IK10

Model	W x H x D mm	Model	W x H x D mm	Model	W x H x D mm
STXD8 620	800 x 600 x 200	STXD8 820	800 x 800 x 200	STXD10 1020	1000 x 1000 x 200
STXD8 625	800 x 600 x 250	STXD8 825	800 x 800 x 250	STXD10 1025	1000 x 1000 x 250
STXD8 630	800 x 600 x 300	STXD8 830	800 x 800 x 300	STXD10 1030	1000 x 1000 x 300
STXD8 640	800 x 600 x 400	STXD8 840	800 x 800 x 400	STXD10 1040	1000 x 1000 x 400
STXD10 620	1000 x 600 x 200	STXD10 820	1000 x 800 x 200	STXD12 1020	1200 x 1000 x 200
STXD10 625	1000 x 600 x 250	STXD10 825	1000 x 800 x 250	STXD12 1025	1200 x 1000 x 250
STXD10 630	1000 x 600 x 300	STXD10 830	1000 x 800 x 300	STXD12 1030	1200 x 1000 x 300
STXD10 640	1000 x 600 x 400	STXD10 840	1000 x 800 x 400	STXD12 1040	1200 x 1000 x 400
STXD12 620	1000 x 600 x 200	STXD12 820	1200 x 800 x 200	STXD10 1220	1000 x 1200 x 200
STXD12 625	1200 x 600 x 250	STXD12 825	1200 x 800 x 250	STXD10 1225	1000 x 1200 x 250
STXD12 630	1200 x 600 x 300	STXD12 830	1200 x 800 x 300	STXD10 1230	1000 x 1200 x 300
STXD12 640	1200 x 600 x 400	STXD12 840	1200 x 800 x 400	STXD10 1240	1000 x 1200 x 400

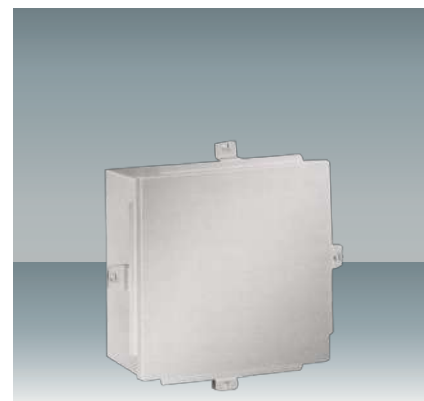


**New Stainless steel box - TNF**

**All new stainless steel box supply include:**

AISI304, AISI316L stainless steel plate (material optional) / Door plank USES pull an angle to from, also can use welding to from, single door can be left and right side swap installation. The maximum opening angle of the door is 110°, the surface is processed into slik stripes, 240mesh. box thickness: 1.5mm, box cover thickness 2.0mm, mounting thickness 2.5mm

Model	W x H x D mm	Model	W x H x D mm	Model	W x H x D mm
TNF1 108	102 x 102 x 83	TNF25 313	254 x 305 x 134	TNF3 315	305 x 300 x 159
TNF1 1508	102 x 152 x 83	TNF15 215	152 x 203 x 159	TNF3 3515	305 x 356 x 159
TNF15 209	152 x 203 x 96	TNF2 215	203 x 203 x 159	TNF35 415	356 x 406 x 159
TNF1 1510	102 x 152 x 109	TNF2 2515	203 x 254 x 159	TNF25 421	254 x 400 x 210
TNF15 1510	152 x 150 x 109	TNF2 315	203 x 300 x 159	TNF3 221	305 x 200 x 210
TNF15 1510-1	152 x 152 x 109	TNF25 215	254 x 200 x 159	TNF35 221	356 x 200 x 210
TNF15 210	152 x 203 x 109	TNF25 2515	254 x 254x 159	TNF35 426	356 x 400 x 261
TNF2 210	203 x 203 x 109	TNF25 315	254 x 300 x 159		
TNF25 2510	203 x 254 x 109	TNF25 415	254 x 400 x 159		



**STAINLESS STEEL WALL MOUNT ENCLOSURE**

**New Stainless steel box - TLXB**

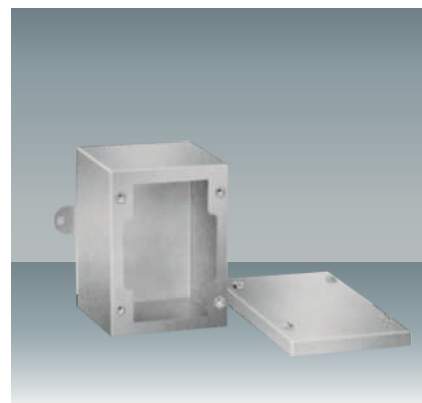
All new stainless steel box:

Protection Level: IP66, according to standard: IE60529 in accordance with the NEMA Type 4X standards

Authention: \*CE \*ROHS \*ISO9001

Surfsce treatment: Stainless steel - stain finish, 240mesh

Model	W x H x D mm
TLXB3 318	305 x 305 x 182
TLXB4 518	406 x 508 x 182
TLXB5 518	508 x 508 x 182
TLXB3 618	305 x 610 x 182
TLXB4 618	406 x 610 x 182
TLXB5 618	508 x 610 x 182
TLXB5 718	508 x 762 x 182



**New Stainless steel box - HLP**

Model	W x H x D mm
HLP3 318	305 x 305 x 182
HLP3 418	305 x 406 x 182
HLP3 618	305 x 610 x 182
HLP4 418	406 x 406 x 182
HLP4 518	406 x 508 x 182
HLP4 618	406 x 610 x 182
HLP5 418	508 x 406 x 182
HLP5 518	508 x 508 x 182
HLP5 618	508 x 610 x 182
HLP5 718	508 x 762 x 182
HLP6 718	610 x 762 x 182
HLP6 918	610 x 914 x 182
HLP3 423	305 x 406 x 233
HLP4 523	406 x 508 x 233
HLP5 523	508 x 508 x 233

Model	W x H x D mm
HLP5 623	508 x 610 x 233
HLP5 723	508 x 762 x 233
HLP6 523	610 x 508 x 233
HLP6 623	610 x 610 x 233
HLP6 723	610 x 762 x 233
HLP6 923	610 x 914 x 233
HLP7 623	762 x 610 x 233
HLP7 723	762 x 762 x 233
HLP7 923	762 x 914 x 233
HLP7 1023	762 x 1067 x 233
HLP9 1023	914 x 1067 x 233
HLP9 1223	914 x 1219 x 233
HLP9 1523	914 x 1524 x 233
HLP4 528	406 x 508 x 284
HLP5 628	508 x 610 x 284

Model	W x H x D mm
HLP6 728	610 x 762 x 284
HLP7 928	762x 914 x 284
HLP7 1228	762 x 1219 x 284
HLP9 1228	914 x 1219 x 284
HLP9 1528	914 x 1524 x 284
HLP12 1528	1221 x 1576 x 286
HLP6 733	610 x 762 x 335
HLP7 933	762 x 914 x 335
HLP9 1233	914 x 1219 x 335
HLP15 1533	1526 x 1576 x 336
HLP15 1833	1526 x 1811 x 336
HLP18 1833	1830 x 1811 x 336
HLP7 943	762 x 914 x 436
HLP9 1543	914 x 1524 x 436
HLP18 1864	1830 x 1811 x 641



**New Stainless steel box - TEX**



TEXA Four bolt type



TEXB Hinge type



TEXC Four bolt anti-theft type

Model	Model	Model	W x H x D mm
TEXA 1 1209	TEXB 1 1209	TEXC 1 1209	100 x 120 x 90
TEXA 15 1510	TEXB 15 1510	TEXC 15 1510	150 x 150 x 100
TEXA 2 210	TEXB 2 210	TEXC 2 210	200 x 200 x 100
TEXA 2 315	TEXB 2 315	TEXC 2 315	200 x 300 x 150
TEXA 28 2815	TEXB 28 2815	TEXC 28 2815	280 x 280 x 150
TEXA 38 3815	TEXB 38 3815	TEXC 38 3815	380 x 380 x 150

Model	Model	Model	W x H x D mm
TEXA 45 3815	TEXB 45 3815	TEXC 45 3815	450 x 380 x 150
TEXA 57 3815	TEXB 57 3815	TEXC 57 3815	570 x 380 x 150
TEXA 57 5715	TEXB 57 5715	TEXC 57 5715	570 x 570 x 150
TEXA 76 5720	TEXB 76 5720	TEXC 76 5720	760 x 570 x 200
TEXA 95 7620	TEXB 95 7620	TEXC 95 7620	950 x 760 x 200
TEXA 57 5730	TEXB 57 5730	TEXC 57 5730	570 x 570 x 300

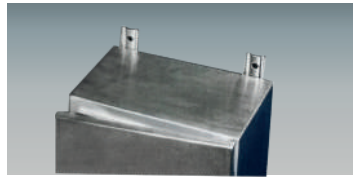
**ACCESSORIES FOR STAINLESS STEEL BOX**

**Lock for STX stainless steel enclosure**



**Wall mount brackets for STX stainless steel wall mount box**

Model: WCX-010  
Material: stainless steel AISI304  
Package: 4pcs/set with fixing accessories



**Wall mount brackets for TLX, TBX stainless steel terminal box**

Model: WLX-010  
Material: stainless steel AISI304  
Package: 4pcs/set with fixing accessories



**Canopy for STX stainless steel wall mount box**

Model: TTX  
Recommended for outdoor installation-manufactured in 1.2mm AISI 304 stainless steel. Package: 1 piece

Model	for box size(mm)	
	W	D
TTX1 03	300	150
TTX2 03	300	200
TTX0 04	400	150
TTX1 04	400	200
TTX2 04	400	250
TTX3 04	400	300
TTX0 05	500	150
TTX1 05	500	200
TTX2 05	500	250

Model	for box size(mm)	
	W	D
TTX3 05	500	300
TTX0 06	600	200
TTX1 06	600	250
TTX2 06	600	300
TTX3 06	600	400
TTX0 08	800	200
TTX1 08	800	250
TTX2 08	800	300
TTX3 08	800	400

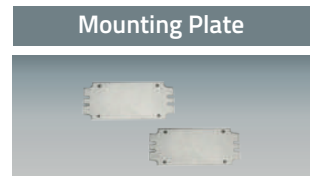


**Mounting Plate for TLX, TBX stainless steel terminal box**

Manufactured in 1.5mm galvanized sheet steel, for box MODEL TLX, TBX, TL, TB series  
Package: 1 piece

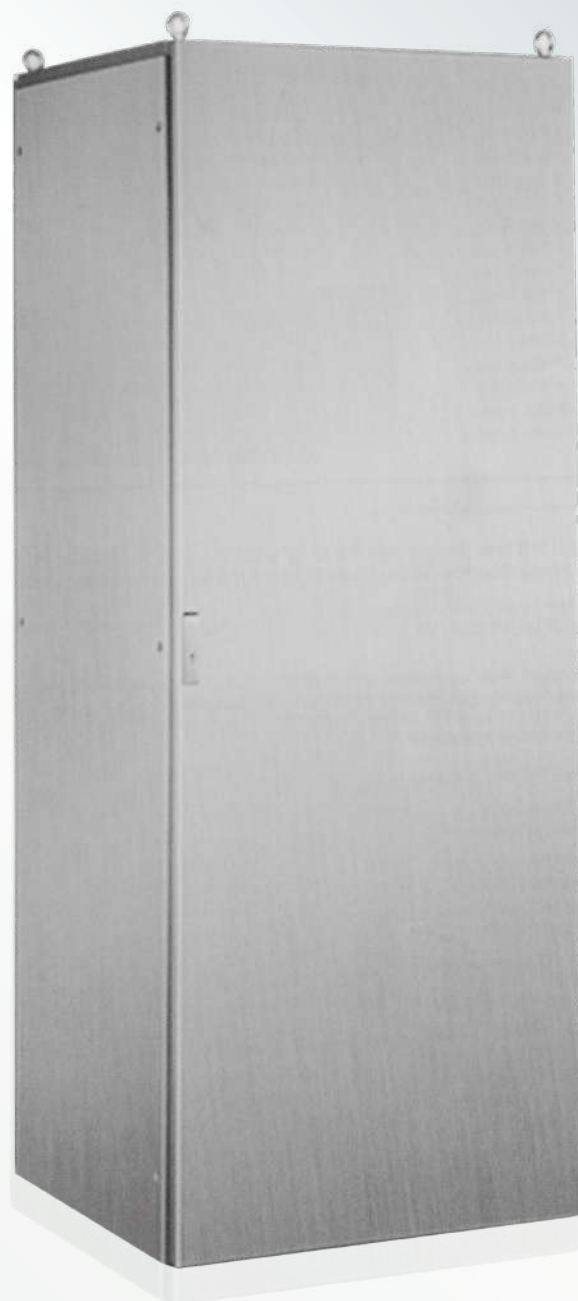
Model	for box size(mm)	
	W	D
TL1515	150	150
TL2015	200	150
TL2020	200	200
TL3015	300	150
TL3020	300	200
TL4015	400	150
TL4020	400	200

Model	for box size(mm)	
	W	D
TL4030	400	300
TL4040	400	400
TL5020	500	200
TL5030	500	300
TL6020	600	200
TL8020	800	200
TL8040	800	400





## Stainless Steel Free Standing Enclosures



### AK9X STAINLESS STEEL CABINET - SINGLE DOOR

Material: stainless steel AISI304 or AISI316L (on request)

Thickness: front door 2.0mm / rear panel 1.5mm / side panels 1.5mm / top cover & bottom cable plate 1.5mm / galvanized mounting plate 2.5mm / 9-folded rails 1.5mm

Protection ratings: IP 55

Impact resistance IK10

**Supply include:**

9-folded rails 4pcs/set, door complete with MS821-X locking system & hinges, rear panel, side panels 2pcs/set, top cover, bottom with removable cable entry, 4 lifting eyebolts.

Plinth to be offered separately (see page 40)

Model	W x H x D mm	No. of door
AK9X 146/4	600 x 1400 x 400	1
AK9X 146/6	600 x 1400 x 600	1
AK9X 148/4	800 x 1400 x 400	1
AK9X 148/6	800 x 1400 x 600	1
AK9X 148/8	800 x 1400 x 800	1
AK9X 166/6	600 x 1600 x 600	1
AK9X 166/8	600 x 1600 x 800	1
AK9X 168/6	800 x 1600 x 600	1
AK9X 168/8	800 x 1600 x 800	1
AK9X 186/4	600 x 1800 x 400	1
AK9X 186/5	600 x 1800 x 500	1
AK9X 186/6	600 x 1800 x 600	1
AK9X 186/8	600 x 1800 x 800	1
AK9X 188/4	800 x 1800 x 400	1
AK9X 188/5	800 x 1800 x 500	1
AK9X 188/6	800 x 1800 x 600	1
AK9X 1810/4	1000 x 1800 x 400	1
AK9X 1810/5	1000 x 1800 x 500	1

Model	W x H x D mm	No. of door
AK9X 203/8	300 x 2000 x 800	1
AK9X 204/5	400 x 2000 x 500	1
AK9X 204/6	400 x 2000 x 600	1
AK9X 206/4	600 x 2000 x 400	1
AK9X 206/5	600 x 2000 x 500	1
AK9X 206/6	600 x 2000 x 600	1
AK9X 206/8	600 x 2000 x 800	1
AK9X 208/4	800 x 2000 x 400	1
AK9X 208/5	800 x 2000 x 500	1
AK9X 208/6	800 x 2000x 600	1
AK9X 208/8	800 x 2000 x 800	1
AK9X 2010/4	1000 x 2000 x 400	1
AK9X 2010/5	1000 x 2000 x 500	1
AK9X 2010/6	1000 x 2000 x 600	1
AK9X 2010/8	1000 x 2000 x 800	1
AK9X 226/8	600 x 2200 x 800	1
AK9X 228/6	800 x 2200 x 600	1
AK9X 228/8	800 x 2200 x 800	1



more size to be request to the clients

### AK9XP STAINLESS STEEL CABINET WITH GLASS DOOR

Material: stainless steel AISI304 or AISI316L (on request)

Thickness: front door 2.0mm / rear panel 1.5mm / side panels 1.5mm / top cover & bottom cable plate 1.5mm / galvanized mounting plate 2.5mm / 9-folded rails 1.5mm / thickness of 5mm material toughened glass

Protection ratings: IP 55

Impact resistance IK10

**Supply include:**

9-folded rails 4pcs/set, door complete with MS821-X locking system with toughened glass window, ang hinges, rear panel, side panels 2pcs/set, top cover, bottom with removable cable entry, 4 lifting eyebolts. Plinth to be offered separately (see page 40)

Model	W x H x D mm	No. of door
AK9XP 146/4	600 x 1400 x 400	1
AK9XP 146/6	600 x 1400 x 600	1
AK9XP 148/4	800 x 1400 x 400	1
AK9XP 148/6	800 x 1400 x 600	1
AK9XP 148/8	800 x 1400 x 800	1
AK9XP 166/6	600 x 1600 x 600	1
AK9XP 166/8	600 x 1600 x 800	1
AK9XP 168/6	800 x 1600 x 600	1
AK9XP 168/8	800 x 1600 x 800	1
AK9XP 186/4	600 x 1800 x 400	1
AK9XP 186/5	600 x 1800 x 500	1
AK9XP 186/6	600 x 1800 x 600	1
AK9XP 186/8	600 x 1800 x 800	1
AK9XP 188/4	800 x 1800 x 400	1
AK9XP 188/5	800 x 1800 x 500	1
AK9XP 188/6	800 x 1800 x 600	1
AK9XP 1810/4	1000 x 1800 x 400	1
AK9XP 1810/5	1000 x 1800 x 500	1

Model	W x H x D mm	No. of door
AK9XP 203/8	300 x 2000 x 800	1
AK9XP 204/5	400 x 2000 x 500	1
AK9XP 204/6	400 x 2000 x 600	1
AK9XP 206/4	600 x 2000 x 400	1
AK9XP 206/5	600 x 2000 x 500	1
AK9XP 206/6	600 x 2000 x 600	1
AK9XP 206/8	600 x 2000 x 800	1
AK9XP 208/4	800 x 2000 x 400	1
AK9XP 208/5	800 x 2000 x 500	1
AK9XP 208/6	800 x 2000x 600	1
AK9XP 208/8	800 x 2000 x 800	1
AK9XP 2010/4	1000 x 2000 x 400	1
AK9XP 2010/5	1000 x 2000 x 500	1
AK9XP 2010/6	1000 x 2000 x 600	1
AK9XP 2010/8	1000 x 2000 x 800	1
AK9XP 226/8	600 x 2200 x 800	1
AK9XP 228/6	800 x 2200 x 600	1
AK9XP 228/8	800 x 2200 x 800	1



more size to be request to the clients

**AK9XI STAINLESS STEEL CABINET - INNER DOOR**

Material: stainless steel AISI304 or AISI316L (on request)

Thickness: front door 2.0mm / rear panel 1.5mm / side panels 1.5mm / top cover & bottom cable plate 1.5mm / galvanized mounting plate 2.5mm / Inner door 1.5mm / 9-folded rails 1.5mm

Protection ratings: IP 55

Impact resistance IK10

**Supply include:**

9-folded rails 4pcs/set, door complete with MS821-X locking system & hinges, inner door with lock LK-5, rear panel, side panels 2pcs/set, top cover, bottom with removable cable entry, 4 lifting eyebolts. Plinth to be offered separately (see page 40)

Model	W x H x D mm	No. of door
AK9XI 146/4	600 x 1400 x 400	1
AK9XI 146/6	600 x 1400 x 600	1
AK9XI 148/4	800 x 1400 x 400	1
AK9XI 148/6	800 x 1400 x 600	1
AK9XI 148/8	800 x 1400 x 800	1
AK9XI 166/6	600 x 1600 x 600	1
AK9XI 166/8	600 x 1600 x 800	1
AK9XI 168/6	800 x 1600 x 600	1
AK9XI 168/8	800 x 1600 x 800	1
AK9XI 186/4	600 x 1800 x 400	1
AK9XI 186/5	600 x 1800 x 500	1
AK9XI 186/6	600 x 1800 x 600	1
AK9XI 186/8	600 x 1800 x 800	1
AK9XI 188/4	800 x 1800 x 400	1
AK9XI 188/5	800 x 1800 x 500	1
AK9XI 188/6	800 x 1800 x 600	1
AK9XI 1810/4	1000 x 1800 x 400	1
AK9XI 1810/5	1000 x 1800 x 500	1

Model	W x H x D mm	No. of door
AK9XI 203/8	300 x 2000 x 800	1
AK9XI 204/5	400 x 2000 x 500	1
AK9XI 204/6	400 x 2000 x 600	1
AK9XI 206/4	600 x 2000 x 400	1
AK9XI 206/5	600 x 2000 x 500	1
AK9XI 206/6	600 x 2000 x 600	1
AK9XI 206/8	600 x 2000 x 800	1
AK9XI 208/4	800 x 2000 x 400	1
AK9XI 208/5	800 x 2000 x 500	1
AK9XI 208/6	800 x 2000x 600	1
AK9XI 208/8	800 x 2000 x 800	1
AK9XI 2010/4	1000 x 2000 x 400	1
AK9XI 2010/5	1000 x 2000 x 500	1
AK9XI 2010/6	1000 x 2000 x 600	1
AK9XI 2010/8	1000 x 2000 x 800	1
AK9XI 226/8	600 x 2200 x 800	1
AK9XI 228/6	800 x 2200 x 600	1
AK9XI 228/8	800 x 2200 x 800	1



more size to be request to the clients

**AK9XIP STAINLESS STEEL CABINET - INNER DOOR WITH GLASS DOOR**

Material: stainless steel AISI304 or AISI316L (on request)

Thickness: front door 2.0mm / rear panel 1.5mm / side panels 1.5mm / top cover & bottom cable plate 1.5mm / galvanized mounting plate 2.5mm / Inner door 1.5mm / 9-folded rails 1.5mm / thickness of 5mm material toughened glass

Protection ratings: IP 55

Impact resistance IK10

**Supply include:**

9-folded rails 4pcs/set, door complete with MS821-X locking system with toughened glass window, ang hinges, inner door with lock LK-5, rear panel, side panels 2pcs/set, top cover, bottom with removable cable entry, 4 lifting eyebolts. Plinth to be offered separately (see page 40)

Model	W x H x D mm	NO. of door
AK9XIP 146/4	600 x 1400 x 400	1
AK9XIP 146/6	600 x 1400 x 600	1
AK9XIP 148/4	800 x 1400 x 400	1
AK9XIP 148/6	800 x 1400 x 600	1
AK9XIP 148/8	800 x 1400 x 800	1
AK9XIP 166/6	600 x 1600 x 600	1
AK9XIP 166/8	600 x 1600 x 800	1
AK9XIP 168/6	800 x 1600 x 600	1
AK9XIP 168/8	800 x 1600 x 800	1
AK9XIP 186/4	600 x 1800 x 400	1
AK9XIP 186/5	600 x 1800 x 500	1
AK9XIP 186/6	600 x 1800 x 600	1
AK9XIP 186/8	600 x 1800 x 800	1
AK9XIP 188/4	800 x 1800 x 400	1
AK9XIP 188/5	800 x 1800 x 500	1
AK9XIP 188/6	800 x 1800 x 600	1
AK9XIP 1810/4	1000 x 1800 x 400	1
AK9XIP 1810/5	1000 x 1800 x 500	1

Model	W x H x D mm	NO. of door
AK9XIP 203/8	300 x 2000 x 800	1
AK9XIP 204/5	400 x 2000 x 500	1
AK9XIP 204/6	400 x 2000 x 600	1
AK9XIP 206/4	600 x 2000 x 400	1
AK9XIP 206/5	600 x 2000 x 500	1
AK9XIP 206/6	600 x 2000 x 600	1
AK9XIP 206/8	600 x 2000 x 800	1
AK9XIP 208/4	800 x 2000 x 400	1
AK9XIP 208/5	800 x 2000 x 500	1
AK9XIP 208/6	800 x 2000x 600	1
AK9XIP 208/8	800 x 2000 x 800	1
AK9XIP 2010/4	1000 x 2000 x 400	1
AK9XIP 2010/5	1000 x 2000 x 500	1
AK9XIP 2010/6	1000 x 2000 x 600	1
AK9XIP 2010/8	1000 x 2000 x 800	1
AK9XIP 226/8	600 x 2200 x 800	1
AK9XIP 228/6	800 x 2200 x 600	1
AK9XIP 228/8	800 x 2200 x 800	1



more size to be request to the clients

**AK9X/D STAINLESS STEEL CABINET - DOUBLE DOOR**

Material: stainless steel AISI304 or AISI316L (on request)  
 Thickness: front door 2.0mm / rear panel 1.5mm / side panels 1.5mm / top cover & bottom cable plate 1.5mm / galvanized mounting plate 2.5mm / 9-folded rails 1.5mm  
 Protection ratings: IP 55  
 Impact resistance IK10

**Supply include:**

9-folded rails 4pcs/set, door complete with MS821-X locking system & hinges, rear panel, side panels 2pcs/set, top cover, bottom with removable cable entry, 4 lifting eyebolts.  
 Plinth to be offered separately. (see page 40)

Model	W x H x D mm	No. of door
AK9X 1810/4D	1000 x 1800 x 400	2
AK9X 1810/5D	1000 x 1800 x 500	2
AK9X 1810/6D	1000 x 1800 x 600	2
AK9X 1812/4D	1200 x 1800x 400	2
AK9X 1812/5D	1200 x 1800 x 500	2
AK9X 1812/6D	1200 x 1800 x 600	2
AK9X 2010/4D	1000 x 2000 x 400	2
AK9X 2010/5D	1200 x 2000 x 500	2
AK9X 2010/6D	1200 x 2000 x 600	2
AK9X 2212/4D	1200 x 2200 x 400	2
AK9X 2212/5D	1200 x 2200 x 500	2
AK9X 2212/6D	1200 x 2200 x 600	2

*more size to be request to the clients*



**AK8X/D ONE PIECE STAINLESS STEEL CABINET - DOUBLE DOOR**

Material: stainless steel AISI304 or AISI316L (on request)  
 Protection degree: IP 55  
 Impact resistance IK10  
 Thickness of the sheet steel: Front door 2.0mm / enclosure body 1.5mm/ bottom cable plate 1.5mm / galvanized mounting plate: 2.5mm

**Supply include:**

AK8X structure enclosure body, double door complete with MS821-X locking system and hinges, bottom with removable cable entry. 4 lifting eyebolts  
 Plinth to be offered separately. (see page 40)

Model	W x H x D mm	No. of door
AK8X 1010/3D	1000 x 1000 x 300	2
AK8X 1210/3D	1000 x 1200 x 300	2
AK8X 1212/4D	1200 x 1200 x 400	2
AK8X 1410/4D	1000 x 1400 x 400	2
AK8X 1412/4D	1200 x 1400 x 400	2
AK8X 1610/3D	1000 x 1600 x 300	2
AK8X 1610/4D	1000 x 1600 x 400	2
AK8X 1612/3D	1200 x 1600 x 300	2
AK8X 1612/4D	1200 x 1600 x 400	2
AK8X 1810/4D	1000 x 1800 x 400	2
AK8X 1810/5D	1000 x 1800 x 500	2
AK8X 1812/4D	1200 x 1800 x 400	2

Model	W x H x D mm	No. of door
AK8X 1812/5D	1200 x 1800 x 500	2
AK8X 1816/4D	1600 x 1800 x 400	2
AK8X 1816/5D	1600 x 1800 x 500	2
AK8X 2010/4D	1000 x 2000 x 400	2
AK8X 2010/5D	1000 x 2000 x 500	2
AK8X 2012/4D	1200 x 2000 x 400	2
AK8X 2012/5D	1200 x 2000 x 500	2
AK8X 2012/6D	1200 x 2000 x 600	2
AK8X 2016/4D	1600 x 2000 x 400	2
AK8X 2016/5D	1600 x 2000 x 500	2
AK8X 2016/6D	1600 x 2000 x 600	2

*more size to be request to the clients*





**AK8X ONE PIECE FLOOR STAND STAINLESS STEEL CABINET - SINGLE DOOR**

Material: stainless steel AISI304 or AISI316L (on request)

Protection ratings: IP 55

Impact resistance IK10

Thickness of the sheet steel: Front door 2.0mm/ enclosure body 1.5mm/ galvanized mounting plate: 2.5mm/ bottom cable plate 1.5mm

**Supply include:**

AK8X structure enclosure body, door complete with MS821-X locking system & hinges, bottom with removable cable entry. 4 lifting eyebolts.

Plinth to be offered separately. (see page 40)

Model	W x H x D mm	NO. of door
AK8X 128/3	800 x 1200 x 300	1
AK8X 146/3	600 x 1400 x 300	1
AK8X 146/4	600 x 1400 x 400	1
AK8X 148/3	800 x 1400 x 300	1
AK8X 148/4	800 x 1400 x 400	1
AK8X 166/3	600 x 1600 x 300	1
AK8X 166/4	600 x 1600 x 400	1
AK8X 168/3	800 x 1600 x 300	1
AK8X 168/4	800 x 1600 x 400	1
AK8X 186/3	600 x 1800 x 300	1
AK8X 186/4	600 x 1800 x 400	1
AK8X 186/5	600 x 1800 x 500	1
AK8X 186/6	600 x 1800 x 600	1

Model	W x H x D mm	NO. of door
AK8X 188/3	800 x 1800 x 300	1
AK8X 188/4	800 x 1800 x 400	1
AK8X 188/5	800 x 1800 x 500	1
AK8X 188/6	800 x 1800 x 600	1
AK8X 206/3	600 x 2000 x 300	1
AK8X 206/4	600 x 2000 x 400	1
AK8X 206/5	600 x 2000 x 500	1
AK8X 206/6	600 x 2000 x 600	1
AK8X 208/3	800 x 2000 x 300	1
AK8X 208/4	800 x 2000 x 400	1
AK8X 208/5	800 x 2000 x 500	1
AK8X 208/6	800 x 2000 x 600	1

more size to be request to the clients



**AK8XP STAINLESS STEEL CABINET WITH TOUGHENED GLASS DOOR**

Material: stainless steel AISI304 or AISI316L (on request)

Protection ratings: IP 55

Impact resistance IK10

Thickness of the sheet steel: Front door 2.0mm/ enclosure body 1.5mm/ bottom cable plate 1.5mm/ galvanized mounting plate: 2.5mm/ toughened glass window 5.0mm

**Supply include:**

AK8X structure cabinet body, door complete with MS821-X locking system with toughened glass window, and hinges, bottom with removable cable entry, 4 lifting eyebolts.

Plinth to be offered separately. (see page 40)

Model	W x H x D mm	No. of door
AK8XP 128/3	800 x 1200 x 300	1
AK8XP 146/3	600 x 1400 x 300	1
AK8XP 146/4	600 x 1400 x 400	1
AK8XP 148/3	800 x 1400 x 300	1
AK8XP 148/4	800 x 1400 x 400	1
AK8XP 166/3	600 x 1600 x 300	1
AK8XP 166/4	600 x 1600 x 400	1
AK8XP 168/3	800 x 1600 x 300	1
AK8XP 168/4	800 x 1600 x 400	1
AK8XP 186/3	600 x 1800 x 300	1
AK8XP 186/4	600 x 1800 x 400	1
AK8XP 186/5	600 x 1800 x 500	1
AK8XP 186/6	600 x 1800 x 600	1

Model	W x H x D mm	No. of door
AK8XP 188/3	800 x 1800 x 300	1
AK8XP 188/4	800 x 1800 x 400	1
AK8XP 188/5	800 x 1800 x 500	1
AK8XP 188/6	800 x 1800 x 600	1
AK8XP 206/3	600 x 2000 x 300	1
AK8XP 206/4	600 x 2000 x 400	1
AK8XP 206/5	600 x 2000 x 500	1
AK8XP 206/6	600 x 2000 x 600	1
AK8XP 208/3	800 x 2000 x 300	1
AK8XP 208/4	800 x 2000 x 400	1
AK8XP 208/5	800 x 2000 x 500	1
AK8XP 208/6	800 x 2000 x 600	1

more size to be request to the clients



**PLINTH FOR AK8X, AK9X STAINLESS STEEL CABINET**

Standard plinth: H=100mm, H=200mm PLX is made up of 1.5mm stainless steel

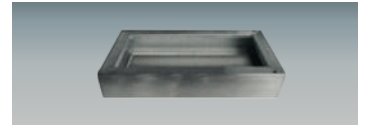
Model		for box size(mm)	
H100	H200	W	D
PLX1 35	PLX2 35	300	500
PLX1 36	PLX2 36	300	600
PLX1 38	PLX2 38	300	800
PLX1 45	PLX2 45	400	500
PLX1 46	PLX2 46	400	600
PLX1 64	PLX2 64	600	400
PLX1 65	PLX2 65	600	500
PLX1 66	PLX2 66	600	600

Model		for box size(mm)	
H100	H200	W	D
PLX1 86	PLX2 86	800	600
PLX1 88	PLX2 88	800	800
PLX1 104	PLX2 104	1000	400
PLX1 105	PLX2 105	1000	500
PLX1 106	PLX2 106	1000	600
PLX1 108	PLX2 108	1000	800
PLX1 124	PLX2 124	1200	400
PLX1 125	PLX2 125	1200	500

*more size to be request to the clients*



Plinth





**AR CORPORATION LIMITED**

2318 Leighton Centre, 77 Leighton Road,  
Causeway Bay,  
Hong Kong.

Tel : (852) 3796-9550  
Fax : (852) 3796-9687

Web: [www.akuraenclosures.com](http://www.akuraenclosures.com)  
Email: [info@akuraenclosures.com](mailto:info@akuraenclosures.com)